

# the solihull index

a community magazine and business directory  
for residents of solihull delivered FREE to 5700 homes

## N.BIRD & SON

### ROOFING SERVICES



## FREE QUOTES

EST 1987 SOLIHULL BASED

- Small Repairs
- Flat Roofs
- New Roofs
- Ridge Tiles
- Chimney Work
- Lead Work
- UPVC Facia, Soffit & Gutters
- GRP Flat Roofs
- Small brickwork jobs

## 0121 743 6324

LOCAL FAMILY RUN BUSINESS



249 Lyndon Road, Solihull B92 7QP

# BOUCLÉ

BY GINA LOU

## £25 CUT&BLOWDRY

NEW CLIENTS THROUGHOUT FEBRUARY

BECKETTS FARM, WYTHALL, BIRMINGHAM, B47 6AJ

[WWW.BOUCLE.CO.UK](http://WWW.BOUCLE.CO.UK)



BOUCLE\_HAIR



BOUCLEHAIRDESIGN

T&Cs apply. To be redeemed with our stylist Abbey Wednesday -Saturday.

*Gina Lou* BRIDAL

LUXURY BESPOKE  
BRIDAL BOUTIQUE

VALENTINES COMPETITION

Send your love letter to us to be added to our Love letter window & win a £100 voucher!

Follow our Instagram page for full details!

BECKETTS FARM, WYTHALL, BIRMINGHAM, B47 6AJ

[WWW.GINALOUBRIDAL.COM](http://WWW.GINALOUBRIDAL.COM)



GINALOUBRIDAL



# Love is in the air!

Welcome to the February edition...

If you're looking to spoil your loved one for Valentine's Day then why not treat them to a night out, rather than buying yet another box of chocolates?!

Whether you fancy soul music, an Elvis tribute, or some live comedy, there's something for everyone – just check out page 6 to see what's happening in the local area. And if you're feeling flash, you could always take a trip to Boatlife Live at the NEC and treat them to a speedboat! And if Valentine's Day will just pass you by, why not show your home some love instead? There's a wide range of local businesses and tradespeople in here who can help you improve your home, whether you need doors, driveways, or decorating...



Zoe Reece

Tel: 07557 220585

Email: [zoe@dorridgedirectory.com](mailto:zoe@dorridgedirectory.com)

[www.solihullindex.com](http://www.solihullindex.com)



## contents

**6** Events

**23** Competition

**27** Puzzles

**28** Book reviews

**29** Recipe

**32** Useful telephone numbers

**33** Index

Locally designed by: hotlobster design ltd Printed by: Norwood Press

**PLEASE RECYCLE THIS MAGAZINE**

POPULAR **MONDAY & TUESDAY** IS BACK  
NOW AVAILABLE ON **TAKEAWAYS**

ANY  
**STARTER**



ANY  
**MAIN DISH\***



ANY  
**NAN OR RICE**



**£12.90** PP

\*(FISH & KING PRAWNS £3.00 EXTRA PER DISH)

**T: 01564 829 200 | [WWW.MONSOON.RESTAURANT](http://WWW.MONSOON.RESTAURANT)**

**75 MAY LANE, HOLLYWOOD, BIRMINGHAM, B47 5PA**

**OPEN MON - SAT: 5.00PM TILL LATE**

CUSTOMER SERVICE: WE AIM TO PROVIDE 100% CUSTOMER SATISFACTION. SHOULD YOU EXPERIENCE DIFFICULTIES OVER SERVICE OR FOOD  
PLEASE DO NOT HESITATE TO INFORM US. IF ANY MEMBER OF THE STAFF CANNOT RESOLVE ANY ISSUE,  
THEN PLEASE EMAIL US: [HOLLYWOOD.MONSOON@GMAIL.COM](mailto:HOLLYWOOD.MONSOON@GMAIL.COM)

# community events



## Boatlife Live

**17 February**  
**NEC**

The show is curated to give the whole family a day out, celebrate the boating lifestyle, and bring people together. With a replica traditional riverside pub and Mediterranean bar, there will be plenty of places to meet old friends and make new ones while listening to live music and enjoying the welcoming atmosphere. Visit [www.boatlifeevents.com/](http://www.boatlifeevents.com/) for more info.

## Spring Awakening

**19 February**  
**Dovehouse Theatre, Kineton**  
**Green Road, Solihull**

On Frank Wedekind's groundbreaking and controversial play (once banned in Germany), Steven Sater and Duncan Sheik's brilliant rock score and searingly emotional book take the story of sexual awakening, youth revolt, and self-discovery into a new century. Tickets from [www.obsidiantheatricalproductions.com](http://www.obsidiantheatricalproductions.com)

## Northern Soul Night

**26 February**  
**Knowle Royal British Legion**

If you love reggae music, then you are sure to love the sounds of Northern Soul. So, grab your friends and get your dancing shoes on for another fantastic night of Northern Soul music! Tickets available from [www.seetickets.com](http://www.seetickets.com)

## The Real Roy 'Chubby' Brown



**5 March**  
**Land Rover Sports**  
**and Social Club**

'The World's Most Outrageous Comedian' is far too rude for TV, so this live performance is the only place to catch the flamboyant comedian! Tickets from [www.skiddle.com](http://www.skiddle.com)

## The King Elvis Presley Lives On 2022

**9 March**  
**Core Theatre, Solihull**

Gordon Davis is one of the best Elvis tribute artists in the world after winning Images of the King in Memphis Tennessee in 2012. His spine-tingling performance brings the King to life for an entire generation of people too young to have experienced Elvis when he was alive, and for the legions of people who remember the anticipation of every new record and movie.



MIDLANDS  
**ULTRASOUND  
& MEDICAL  
SERVICES**



## Private GP Practice

Private doctors at a time and place to suit you

*There when you or your family need us the most*

Here at MUMs, our private GPs offer the same services as NHS GPs. However, you will never be made to wait for an appointment, nor will your appointment be rushed.



**Here are just some of the services that our private GPs offer:**

- ✓ Consultations
- ✓ Health screens
- ✓ Hay Fever injections
- ✓ Immunisations and travel vaccinations
- ✓ Allergy testing

If the service you require is not listed above, please do not hesitate to contact us directly. We offer many services, and we are confident that we can assist you.

***We offer same day, rapid access, convenience all at an alternative and affordable price.***

We are situated on Park Avenue in Solihull town centre – we are open 6 days per week.

**Book an appointment with a member of our dedicated team**

**Please Call. 0121 704 2669**

Email. [administrator@mums.me.uk](mailto:administrator@mums.me.uk)

### Meet our Private GPs



### Clinic Address

**Midland Ultrasound  
& Medical Services**

1 Park Avenue, Solihull,  
West Midlands B91 3EJ





# AP ALLOYS & BUMPER REPAIRS

*Mobile service to your  
home or business*



## **ALLOY WHEEL REFURBISHMENT** *(Full Face of Wheel)*

Vandal Scratches - Plastic Bumper Damage - Headlight  
Restoration - Dents + Scrapes to any panels - Stonechips  
Machine Polishing - Paint Protection Treatments Applied  
**FREE** Quotations - Main Dealer Approved

Call Andy now for a fast, prompt and professional service.  
Or for an instant quote, text or WhatsApp images to him on:

# **07972 852 758**





# Solihull

TREE CARE SPECIALISTS

**Professional  
Arboricultural  
Services**

**All aspects of arboriculture work undertaken.**

**Pruning, thinning, reshaping, crown lift, reductions, removals and stump removal.**

- All hedge work
- All waste removed
- All work guaranteed to the highest industry standards
- Fully insured
- Free advice and quotations
- NTPC Qualified Workforce



### **COVID-19 UPDATE:**

We are still working – safely and in line with Government guidelines regarding social distancing

**Freephone: 03335 775733**

**Mobile: 07786 527 729**

Email: [info@solihulltreecare.com](mailto:info@solihulltreecare.com) [www.solihulltreecare.com](http://www.solihulltreecare.com)



# R & A Garden Landscapes

**Award winning design and build landscaping company**

## Are you looking for an outdoor space you can enjoy all year round?

Let us create your dream garden. Whether you require a complete garden re-design and build project or wish to improve an area of your garden, we can come up with a solution for making your visions a reality.

- Patios & Paving
- Brickwork
- Decking
- Traditional & Artificial Turf
- Driveway Surfaces
- Water Features & Ponds
- Design Studio

[info@ra-gardenlandscapes.co.uk](mailto:info@ra-gardenlandscapes.co.uk)

07411 619 228 - 0121 537 7273

[www.ra-gardenlandscapes.co.uk](http://www.ra-gardenlandscapes.co.uk)



## "Do they make shopping trolleys out of magnets?"

We don't judge, we just fix it.

**10% OFF**  
Using Code  
**10OFFJW**



**Quality, convenient and cost-effective repairs with a lifetime guarantee.**

Call us today 07479 250 200 for a FREE estimate on repairs to bumper scuffs, paint scratches, minor dents and alloy wheels. Find out more at [chipsaway.co.uk](http://chipsaway.co.uk)

Offer only valid when booking with ChipsAway Jason West. Customer must produce advert at time of booking.

**ChipsAway**  
LIKE IT NEVER HAPPENED

# CROSSROADS SERVICE STATION LTD

A friendly, family-run business since 1969

- MOT Testing – Cars & Motorbikes
- Servicing & Repairs
- Air Conditioning Service & Repair
- Diagnostic Service & Repair
- Laser Wheel Alignment
- Tyres – Supplied & Fitted
- Qualified & Experienced Staff
- Courtesy Car or Collection/Delivery available

**OPEN 6 DAYS  
A WEEK**

MON – FRI 8.00am – 6.00pm  
SAT 8.00am – 1.00pm

**COVID SECURE**



**599-601 Tanworth Lane, Shirley, Solihull B90 4JE**

**Tel: 01564 703225**

**[www.crossroadservicestation.co.uk](http://www.crossroadservicestation.co.uk)**

VAT No.: 113213041

**25%  
DISCOUNT  
WITH THIS ADVERT**



A fully insured and highly skilled roofing company based in Solihull, West Midlands with many years experience. Deluxe Roofing Ltd is a professional, reliable roofing company with unrivalled expertise in the industry.

- New Roofs • Flat Roofs • Minor Repairs • Fascias and Guttering
- Insurance Work • Moss Removal • Rebedding of Ridge Tiles • Chimneys
- Valleys • All Guttering Cleaned and serviced from £39.99

**OFFICE: 0121 314 99 53 FREEPHONE: 0800 747 14 61**

## MIDLANDS BRANCH

UNIT 70, 123 STRATFORD ROAD, SHIRLEY. B90 3ND  
(MIDLANDS BRANCH), COVENTRY, SHIRLEY

**[WWW.DELUXEROOFINGLTD.CO.UK](http://WWW.DELUXEROOFINGLTD.CO.UK)**



# To Valentine, or not to Valentine?

## February 14th is Valentine's Day.

**M**y husband and I don't celebrate Valentine's Day. There, I said it. Before you dismiss us as a couple of old cheapskate cynics, whose relationship is on the rocks, we're both in our late thirties, have been married for twelve years, we rarely argue, and we laugh a lot. We just don't feel the need to celebrate Valentine's Day.

Five years into our marriage we realised that fancy restaurants, or weekends away mean less when everyone else is there doing exactly the same thing at the same time just because it's February 14th. So, we stopped.

We do like to do something romantic during February, but to be honest we like to do something romantic at least once in every other month too. Here are our favourite ideas, not restricted to February.

We cook a meal. Not just a run of the mill, any night of the week meal. We each choose something from one of our cookbooks (main course and dessert) and we set aside an evening to create it. We arrange it around the kids' sleepovers with grandparents or friends. It's our night and we buy good wine, dress up and enjoy each other's company and the process of creating (and eating) a delicious meal.

Write a poem...or a song. My husband writes bad poetry...I'm not joking, it's terrible and stems from him insisting that poetry is not

poetry unless it rhymes! I love poetry and once joked that if he loved me he'd write me an ode. So, he did, and it was awful...but it did rhyme. Periodically he repeats the process, and the results are always hilariously bad. I stick them in a scrap book because as dire as they are, they hold a great deal of meaning for me.

Movie marathon - The Die-Hard films might not be everyone's idea of romantic film fodder, but we love them and every so often we have a day where we watch all of them back-to-back and buy in lunch and supper. Sometimes we

do the Star Wars Trilogy (four, five and six...were there any others?), or the Lord of the Rings series (extended version), or the Bourne films. The point is, it's an event. We set aside time to do it.

Recreate a date - One of my favourite dates from before we were married was when my husband took me stargazing on a clear night. He was an amateur astronomer in his teens and knew his way around the night

sky. We lay on top of his car, covered in blankets clutching binoculars while he told me stories about the constellations and encouraged me to look for shooting stars and the International Space Station (ISS)! Sometimes we recreate that, and I still get a buzz when I see the ISS moving swiftly across the sky. What favourite date could you recreate?

If you love Valentine's Day then you do you. But ask yourself, do you make Valentine plans with your partner just because that's the thing to do? If so, perhaps it's time to make a change.



# QUALITY KITCHEN MAKEOVERS

by simply replacing the doors and worktops



BEFORE

**DREAM DOORS®**  
NEW LIFE FOR OLD KITCHENS

**THE UK'S #1 KITCHEN  
MAKEOVER EXPERTS.**

- From simple door replacements to complete fitted kitchens
- Fully installed by local professionals in just a few days
- Choose from a large selection of doors, worktops and appliances
- 96 showrooms nationwide

[www.dreamdoors.co.uk](http://www.dreamdoors.co.uk)

134 Stratford Road,  
Shirley,  
Solihull, B90 3BB

Call us now for a free estimate:

**0121 744 8974**

**Checkatrade.com**  
Where reputation matters

AVERAGE SCORE **9.7/10**

**22,000 REVIEWS NATIONWIDE**





# CHALLENGE YOUR FRIENDS AND WIN MONEY!

**Think you know more about football than your friends?**

**Fancy putting your football knowledge to the test and seeing who can correctly predict the most match results?**

**Just download the free SoccerPots app, set up a league with your friends, and put your money where your mouth is!**

**Will you be the champion?!**

**[www.soccerpots.co.uk](http://www.soccerpots.co.uk)**



EXPERTS IN THE DESIGN,  
BUILD, INSTALL AND SERVICING  
OF FIRES AND FIREPLACES.

**BROUGHTON**  
FIREPLACES

**WOODGLOW**  
FIREPLACES

At Woodglow we make fireplaces to suit your requirements – any shape, any size, any style, any colour. We are an established family-run business that have been trading for over 20 years.

Come and visit us at our showroom in Olton Hollow and see what we could do for you.

**0121 707 2306**

59 Warwick Road, Olton, Solihull B92 7HS  
Open Monday to Saturday 10am – 5pm





## Do you need a Lasting Power of Attorney?

**Hannah Tait**, partner at Shakespeare Martineau in Solihull explains the common misconceptions of managing the medical and financial needs of loved ones.

### **My mum's in hospital and I need to pay her bills – why can't I access her bank account?**

If a friend or family member has lost capacity due to illness or an accident, you'd expect their next of kin to automatically be able to help them with their finances and make decisions about their care – however, next of kin is not a legal term and this is not as easy as it sounds.

### **Can I make decisions on behalf of a family member?**

Apart from in the special case of children, no individual has the ability to make decisions on behalf of another without first being legally appointed as their Attorney under a Lasting Power of Attorney (LPA) or as a court-appointed Deputy. Even married couples or those in civil partnerships are unable to make decisions for their spouse or partner without these authorities in place.

### **What is a Lasting Power of Attorney?**

Your Attorneys are nominated individuals – such as a professional, family member or friend you appoint to make decisions relating to your financial affairs as well as your personal health and welfare on your behalf, if you become unable to make those decisions yourself due to mental incapacity. Your Attorneys can step in when needed to ensure your affairs remain in good order, money can be easily accessed and to protect your assets together with articulating your personal wishes when it comes to the type of medical treatment you receive.

### **What is a court-appointed Deputy?**

A Deputy is appointed by the Court of Protection to make decisions for someone who is unable to do so on their own. This can be a long process and is a decision made by the court, not the individual who has lost capacity. Therefore it is best to be prepared and put in place and register LPAs before mental capacity becomes a problem and the long winded Deputy route is your only option.

### **I have a Will – do I still need a Lasting Power of Attorney?**

Yes. The Executors you identify in your Will can only make decisions concerning your Estate after you die – not while you are alive. LPAs are in effect an insurance policy against mental incapacity and ensure those who are close to you can assist you with ease and without delay.

### **Who should I choose to be my Attorneys?**

This is ultimately up to you – but it should be someone you can trust implicitly to make decisions in your best interests; whether that be a family member, close friend or a legal professional.



**For more information and support call 0330 912 7738**  
email [Hannah.Tait@shma.co.uk](mailto:Hannah.Tait@shma.co.uk) or visit [www.shma.co.uk](http://www.shma.co.uk)

# Mindbenders

Can you find the hidden Disney Films?

**FORD FIESTA**  
**FIAT 500**  
**VW GOLF**  
**MINI CLUBMAN**

**The Amazon Rainforest Novel**

**Knotted**

answers on page 33



NOT JUST TRAVEL

## HOLIDAYS MADE Better

Choice • Service • Value

**ENQUIRE NOW**

*Any trip • Anywhere • Anytime • Tailor-made*

Honeymoons - Cruises - Adventure Packages - Flights  
 Hotels - Extras - Airport Car Parks - Weddings Abroad



*Sabina Clay*  
 Not Just Travel  
 sabina.clay@notjusttravel.com  
 07565 534 524



ABTA  
 Travel with confidence



# ARE YOUR WINDOWS READY FOR A MAKEOVER?

## New glass in your existing windows

- Replace failed double glazing; just the pane, not the frame

- Fix faulty hinges, handles and locks

A local family-run business with 10+ years of experience



Call **0800 048 5223** for a FREE Quote  
 Or visit **ClearlyBetterWindows.co.uk**  
 to find out more

# Our Guarantee To You...

**Book your holiday now and change it free of charge up to 6 weeks before departure – no catches.**

## **Our Guarantee... The Widest Range Of Flexible Booking Options**

Not all holidays are the same and not all holiday companies offer the same flexible options. That's why we've searched the market to find the best and most flexible options for you. We'll let you know which options best match your needs and make sure we find you the holiday you want with the flexible booking option you need. Remember – not all holidays include flexible terms, that's why we'll let you know about the options available to you.

## **Book Your Holiday... Safe In The Knowledge You Can Change or Cancel**

When you book your holiday today, we'll confirm all of the flexible options you have, this will include:

- Your right to cancel
- Your right to change or amend your holiday

This means that you can be confident knowing that although you've booked and confirmed



your holiday, you can still make changes. That takes any worry out of booking, knowing that if something happens and you can't travel, you can simply change the holiday.

## **The Best Time To Book...**

Now is a great time to book as there are exceptional holiday offers and more flexible booking options. However these won't last forever, so that means now is possibly the best time to book to take advantage. The flexible options could be removed at any time and prices could increase.

## **The Small Print...**

- Not all holidays are available under the 'Book

& Relax' scheme

- Your travel consultant will advise you on options available
- Flexible booking options will be confirmed in the terms & conditions of your booking
- Flexible booking options could be removed at any time by operators, therefore options previously quoted will be reconfirmed at the time of booking.

---

## **Sabina Clay**

Not Just Travel  
[sabina.clay@notjusttravel.com](mailto:sabina.clay@notjusttravel.com)  
 07565 534 524







**Help make a world of difference...  
Become a CAREGiver today!**

Home Instead Solihull

**01564 330 395 | 01212 704 615**

**[www.homeinstead.co.uk/solihull](http://www.homeinstead.co.uk/solihull)**

Each Home Instead© franchise office is independently owned and operated. Copyright © Home Instead 2017.



**For your FREE quotation please contact  
React Roofing today!**

- NEW ROOF SPECIALISTS
- FASCIAS, SOFFITS & GUTTERING
- FLAT ROOF SPECIALISTS
- GRP FIBRE GLASS ROOFING
- LEAD WORK
- CHIMNEY REPAIRS & BUILDS



**ALL WORK  
GUARANTEED**

**Tel: 07922 230 477**

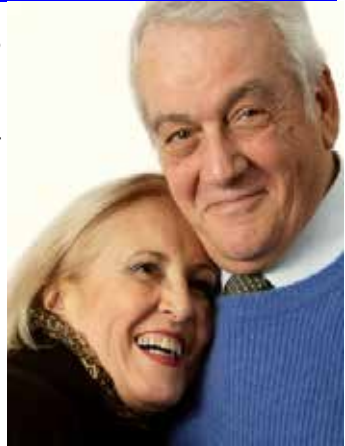
**Email: [reactroofingservices@gmail.com](mailto:reactroofingservices@gmail.com)**

**[www.reactroofingservices.co.uk](http://www.reactroofingservices.co.uk)  
Based in Solihull**

# *Dovehouse Court*

## **61 Privately Owned Apartments Opposite Dovehouse Parade Shops**

- 24 hour on site Duty Manager
- Housekeeping assistance•
- Alarm call system to on site staff•
- Elegantly Decorated & Furnished
- Communal Areas •
- Dining Room with Waitress Service •
- Hobbies Room & Guest Suite •



**Residents' Management Company;**

**Run By The Owners, For The Owners**

**Owners set & control the budget & annual service charge**

***1 & 2 Bedroom Retirement Apartments***

***For Sale***

***£155,000 — £269,950***



Please contact us for a brochure & personal invitation to visit

Dovehouse Court on:

**0121 709 2339**

**[enquiries@dovehousecourt.co.uk](mailto:enquiries@dovehousecourt.co.uk)**

**[www.dovehousecourtltd.co.uk](http://www.dovehousecourtltd.co.uk)**

# damar

## Security Systems Ltd

Meet **Damar Security Systems** installation engineer **Josh Williams**, who talks Security and his time with the company.

### **Hi Josh, so you're the man responsible for fitting new alarm and CCTV systems for Damar Security Systems?**

Indeed I am, I head up the installation team and am usually involved in all new installations.

### **How many years have you been in the industry?**

8 years now. The most recent 4 at Damar.

### **How is it, working for Damar Security?**

Very easy, it's a very relaxed and friendly environment. Sure we have to work hard and sometimes long hours but you never feel under pressure. It's a great company with a real family feel. The gaffers really do make you feel important.

### **So you're staying put at Damar?**

I don't think there is a better company for me, I'm here for life, as long as they want me.

### **What's your life like away from work?**

Well, I have a partner, Charlotte, and we are looking to buy our first home together soon. I love travel and I'm a very keen Manchester United supporter. I recently went to Old Trafford with my brother to watch them live. They won, of course!

### **What's important about security?**

That you have what you need to help you feel safe. Whether that's a panic alarm, or a camera monitoring your cars. Protecting what you value is the ultimate goal.

### **How does Damar Security differ from other security companies?**

The way systems are designed are bespoke to the client. The company always treats every home or business like it's their own. I've not seen that elsewhere. Damar doesn't just sell you an alarm kit, they tailor it with the client for how it is needed most.

### **Finally, what do you bring to Damar Security?**

A calm approach which is really useful when I'm handing over and demonstrating our systems to clients during their installations.

You can always have a look at our testimonials page at [www.damarsecuritysystems.co.uk/case-studies](http://www.damarsecuritysystems.co.uk/case-studies) to see what our clients think.

SERVICING HOMES & BUSINESS  
SINCE 1995

# daMar

## Security Systems Ltd



### Look out for us

When you see our vans in your area then you know that one of our friendly and skilled engineers are installing a home security system near you.

### Always on, always protecting

We have engineers installing new intruder alarms and CCTV systems every day.

Most crucially, we have a dedicated response team 24 hours, every day, responding to any client needing our help.

If you would like to see which homes by you already trust Damar Security System to protect their properties, then on your next walk, look up.... **and see our familiar logo.**



0121 706 8666  
[www.damarsecuritysystems.co.uk](http://www.damarsecuritysystems.co.uk)



# Dimension Groundworks & Driveways

Specialists in Driveways and Landscaping

- Block paving • Tarmacing (red or black) • Patios
- Brickwork • Slabbing • Gravel • Landscaping
- Fencing • Property & roof repairs
- Driveway maintenance  
(pressure cleaning & sealing – weed free)



**07961 358367 / 0121 652 0145 / 01926 674782**

**dimensiongroundworks@icloud.com**

**www.dimensionpathways.co.uk**

**328 Alcester Road Wythall Birmingham West Midlands B47 6JR**

# COMPETITION



## Win 2 tickets

to see

## Revenge

at **Solihull's Core Theatre** on **Thursday 24th March 7.30pm**

For your chance to win these tickets, visit the Core Theatre website page for this event - [www.thecoretheatresolihull.co.uk](http://www.thecoretheatresolihull.co.uk) - to find the answer to this question:

### Who's the Director?

Email your answer to: [thecoretheatre@solihull.gov.uk](mailto:thecoretheatre@solihull.gov.uk) – and please put '**Revenge**' as the subject line.

Closing date for entries is **28th February 2022**. The winner will be drawn at random and notified by email after this date.

*Please note there is no cash value nor exchange for this prize so please don't enter if you cannot attend the date shown above.*

### About the show:

Bill Crayshaw MP leads a charmed life, hailed in the corridors of Parliament, lauded in business, and loved at home. That is until he returns from a business trip to find his party agent has been killed in a terrible, tragic accident – or was it? As the tension mounts and suspense increases, shots ring out and the initial game of cat and mouse turns into a deadly battle, twisting and turning between truth and lies, to reach a thrilling climax that will keep audiences guessing until the final curtain!

# Contain your excitement

For me February marks the real beginning of the gardener's year. Seed sowing starts in earnest, and we can begin to plan to bring the patio pots alive. As a gardener I do raise a lot of my plants from seeds in cold frames and greenhouses. But there is no right way to approach this. If you're super busy and time in the garden is short, wait until late February and purchase fresh, well grown young plants from the garden centre. Yes its more expensive but it might be worth it in time and energy saved.

The patio is a great place to indulge your creativity. Do you want a brilliant chaotic colour palate or a cool tranquil colour scheme, or maybe even monochrome calming greens in many textures of foliage. I think of patio pots like soft furnishings in the house...changing things up can transform the mood.

While containers are conventionally planted in autumn and late spring, they can actually be planted at any time of year, and I like to get a couple planted up in February so they can become really established and give me a running start.

I use containers of all sizes but generally the large ones provide more impact. If they are too large and heavy to move easily, plant them with hardy bulbs or permanent shrubs or trees. You can then add seasonal geraniums

and pansies etc around the core planting. Small, moveable containers can be planted with bright bulbs and specimen plants that can be brought to the front as they reach their peak with flowers or foliage. If you have a sheltered frost-free area for a cold frame or poly cover you can plant early, keep safe from the worst of the winter weather, and then bring them out when the frosts have finished.

Good trees for larger containers are conifers. There is such a huge variety of shapes and colours to choose from. For patios its best to choose more compact, well-groomed shapes in bright greens or yellows. Groups of three or five pots containing contrasting shapes and colours work very well together. Alternatively go for similar shapes in a variety of sizes and colours.

Because February tends to be quite wet

drainage can be an issue. As a guide, patio and decking surfaces should be dry, or only wet if it's rained recently. If a patio or decking is constantly wet it's likely that algae and moss will start to grow which can look unsightly and make the surface dangerously slippery to walk on. Use a strong yard brush and approved detergent to keep hard surfaces clean and safe.

As anticipation in gardening provides much of the pleasure take the garden furniture out of storage this month and clean it up...then you can enjoy a cup of tea on sunny days and watch your patio begin to wake up.





# External Cleaning Specialists

We provide patio, decking, path and driveway cleaning, as well as roof, gutter, fascia and soffit cleaning in Solihull, Knowle, Dorridge and the surrounding areas.

You'll see the difference for yourself when you work with Solclean to clean the exterior of your home or business.



## 0121 369 0070

✉ [enquiries@solclean.co.uk](mailto:enquiries@solclean.co.uk)

🌐 [www.solclean.co.uk](http://www.solclean.co.uk)



VIEW SOLCLEAN ONLINE





BRING YOUR PARTY TO OUR PARTY!

# Enjoy Party Nights

in *Rick's* & **THE MARQUEE**  
at Nailcote Hall Hotel



## MARCH

Sat 5th		SOUL AND MOTOWN PARTY with THE COMMANDMENTS	£45.00
Fri 11th		THE NO. 1 TRIBUTE TO WHITNEY HOUSTON with NYA KING	£37.50
Fri 18th		HITS OF THE DECADES with WIRED	£40.00
Sat 26th		THE MAMMA MIA PARTY with VIVA ABBA	£45.00
Sun 27th		MOTHERS DAY AFTERNOON TEA PARTY with STACEY LYNN	£25.00

## APRIL

Sat 2nd		THE MOTOWN DIVAS SHOW with THE DREAMETTES	£40.00
Fri 8th		THE TAKE THAT SPECTACULAR with TAKE @ THAT	£40.00
Sat 23rd		GEORGE MICHAEL TRIBUTE SHOW with MICHAEL GEORGE	£35.00
Fri 29th		THE SOUL AND MOTOWN PARTY with NAT AUGUSTIN	£35.00

## MAY

Fri 6th		THE ULTIMATE 80's PARTY with ADDICTED TO 80's	£45.00
Sat 14th		'STAR NIGHT' with RAY QUINN	£49.50
Fri 20th		SOUL AND MOTOWN SHOW with DAYTON GREY	£35.00
Fri 27th		BACK TO THE 70's PARTY with CHRIS NOTT	£35.00

## JUNE

Sun 5th		THE QUEEN'S PLATINUM JUBILEE - MARQUEE AND GARDEN PARTY	£45.00
Thur 16th		ROYAL ASCOT 'LADIES' DAY in THE MARQUEE	£89.50
Fri 17th		ROYAL ASCOT 'CHARITY' DAY in THE MARQUEE	£89.50
Fri 24th		ELVIS TRIBUTE SHOW with KEVIN PAUL	£37.50

## JULY

Sat 9th		THE TAKE THAT SPECTACULAR with TAKE @ THAT	£40.00
Sat 23rd		SUMMER MAMMA MIA PARTY with BOOTLEG ABBA	£40.00

TICKET PRICES INCLUDE SET 3 COURSE MEAL, SHOW & DISCO - SPECIAL DIETARY NEEDS BY PRIOR ARRANGEMENT

**farmfoods**  
THE FROZEN FOOD SPECIALISTS

**BRITISH PAR3 CHAMPIONSHIP**

**TUESDAY 9TH - FRIDAY 12TH AUGUST 2022**

NAILCOTE HALL GOLF & COUNTRY CLUB, WARWICKSHIRE - To register for free tickets please visit [www.britishpar3.com](http://www.britishpar3.com)

PLEASE VISIT OUR WEBSITE TO SEE FULL DETAILS

**[www.nailcotehall.co.uk](http://www.nailcotehall.co.uk)**

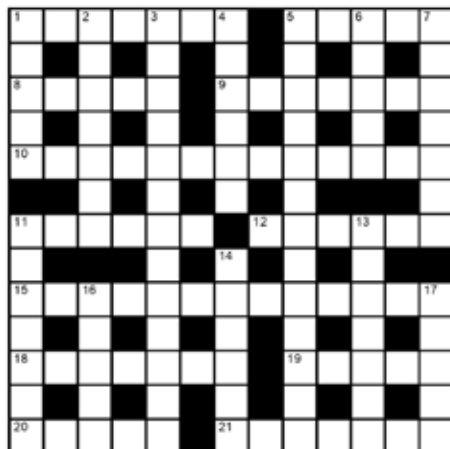
**BOOKING HOTLINE CALL: 02476 466174**



**Nailcote Hall**  
Hotel, Golf & Country Club

info@nailcotehall.co.uk  
Nailcote Lane, Berkswell, Warwickshire CV7 7DE

# crossword



# clues

- 1 Spectacles (7)
- 5 Foot joint (5)
- 8 Apologise, redeem (5)
- 9 Die (7)
- 10 Surveying method used to calculate distance (13)
- 11 Sound reflections (6)
- 12 Petrified prehistoric remains (6)
- 15 Sweets and chocolates (13)
- 18 Heathrow or Gatwick (7)
- 19 Common blood pressure medication (5)
- 20 Layers (5)
- 21 Captures, seduces (7)

## Down

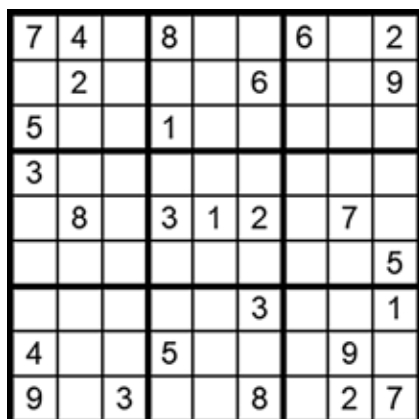
- 1 Enormous, colossal (5)
- 2 Eradicate, prohibit (7)
- 3 American name for canine guides for the blind (6, 3, 4)
- 4 Element with symbol Na (6)
- 5 Person who excavates historic remains (13)
- 6 Brownish-olive (5)
- 7 Without pause, endless (7)
- 11 Bewitch, enthrall (7)
- 13 Rainbow (7)
- 14 Effigy, figure (6)
- 16 Courage, fortitude (5)
- 17 Slang name for US citizens (5)

answer on page 33

# how to play sudoku

## It's simple!

Fill in the grid so that each row, column and 3x3 box, contains the numbers 1 through to 9 with no repetition. You don't need to be a genius. These puzzles use logic alone. Watch out! Sudoku is highly addictive.



answer on page 33

# a good read

reviews By Willow Coby

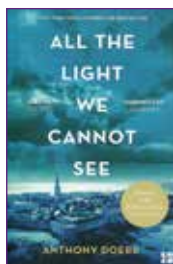
## All the Light We Cannot See

By Anthony Doerr

Marie-Laure is blind. She lives in Paris near the Museum of Natural History, where her father works. When she is twelve, the Nazis occupy Paris forcing father and daughter to flee to the home of Marie-Laure's reclusive great uncle, carrying what might be the museum's most valuable and dangerous jewel. Werner Pfenning, is an orphan, growing up in a mining town with his younger sister, learning about the world through a crude radio they find. Werner's expertise in fixing radios makes him a valuable asset to the Nazis as they track down the resistance. Doerr deftly interweaves the lives of these two youngsters, and along the way shows us how against all the odds, people mostly do try to be good to one another.

This book is built on beautiful imagery. Both in the literal sense - vividly evoking 1940s Paris and Germany - and the metaphorical as it's woven through with scientific and philosophical references to light, to seeing and not seeing, and the differences between the two. It's the beautiful and harrowing story of two childhoods torn apart by war. We learn how Marie-Laure and Werner are both forced along paths they did not choose due to their desperate personal circumstances. There is a running theme of interconnectedness, of invisible lives running parallel to one another yet sometimes coming together in the strangest of ways. Marie-Laure and Werner are from different worlds, yet each influences the other.

All the Light We Cannot See is a haunting novel. The elegant prose and engaging, heart-breaking stories will remain with you long after you've reached the final page. The title hints at the fact that just as we only see a small part of the electromagnetic spectrum, so we are

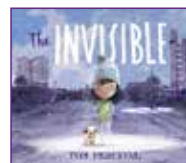


only ever aware of a fraction of the spectrum of history. But if we could look deeper, we'd see the untold stories and they would be beautiful and strangely luminescent in their own right.

## The Invisible

By Tom Percival

This is another book about untold stories and human connections. Tom Percival has blended gorgeous illustrations with his simple, clear prose in this picture book which is perfect for bedtime reading. Isabel is a happy child whose parents love her and each other but the family is struggling financially. They slip through society's cracks and descend into poverty. Isabel discovers that poverty brings a cloak of invisibility. No-one seems to see her, though she can see more than ever before. She begins to notice the other invisible members of society, and she begins to understand that alongside invisibility poverty brings something else...loneliness. Isabel decides that she will do something to tackle the problem. The book has modern social themes, but rather than being unrelentingly grim, or alternatively, ridiculously upbeat and positive, Percival uses his light touch to show us the humanity and love that exist between people everywhere in society, and how we can all make a difference, whoever we are. The beautiful, heart-warming ending doesn't rely on a lottery win, or a fairy godmother but on Isabel herself showing the way. The author has drawn on his own experiences growing up in poverty to create a gentle and thought-provoking window into a world that for many of us goes entirely unnoticed. This is another book that will stay with you and one which children will delight in hearing again because it has the magic of a fairy tale with none of the schmalz.



# Irish Coffee Chocolate Cheesecake

Treat your loved one to a luxurious chocolatey dessert for Valentines



**Serves:** 8

**Preparation time:** 30 minutes plus cooling and chilling time

**Cooking time:** 10 minutes

## Base

Vegetable oil, for oiling  
175g chocolate chip cookies  
55g unsalted butter

## Filling

225g plain chocolate (at least 70%), broken into pieces.  
225g good quality milk chocolate (at least 45%) broken into pieces  
55g golden caster sugar  
350g cream cheese  
425ml double cream, lightly whipped (this means that it's no longer liquid, has increased in volume and just holds its shape when the whisk is removed).

3tbsp coffee cream liqueur

## Method

Line the base of a 20cm springform round cake tin with greaseproof paper and brush the sides with oil. Place the chocolate chip cookies in a polythene bag and crush them with a rolling pin. Melt the butter in a saucepan over a low heat then add the crushed cookies. Press the resulting mixture into the base of the prepared tin, and chill in the fridge for 1 hour. Place the broken plain and milk chocolate into a heatproof

bowl over a pan of simmering water until the chocolate melts. Set aside to cool. Place the sugar and cream cheese into a mixing bowl and beat together until smooth. Fold in the whipped cream, then the melted chocolate, and finally the coffee cream liqueur. Spoon the mixture into the cake tin on top of the biscuit base.

Smooth the surface and place in the fridge to chill for two hours. When it's firm transfer to a serving plate and drizzle with more melted dark chocolate if required.



# The Winter Olympics

## February 4th – 20th

The modern Olympics first took place in 1868. Five years later Sweden decided to stage the first international competition for winter sports. It was called the Nordic Game, and only Scandinavian countries competed. Like the Olympics, it was staged every four years, but it always took place in Sweden.

Then in 1908 figure skating was featured at the summer Olympics... sort of. It was actually showcased three months after the main event!

In 1911 the international Olympic Committee (IOC) proposed a separate winter competition but initially the Swedes were not keen, then the First World War forced the cancellation of all Olympic events.

In 1920, figure skating featured in the summer Olympic schedule again, and was joined by ice hockey, which proved very popular. Soon after, the Scandinavians agreed to stage an IOC-sanctioned International Winter

Sports Week in Chamonix, in the French Alps. 16 nations took part, and it was so successful that in 1925, the Winter Olympics were formally recognised as a separate international event, effectively making the competition at Chamonix the first ever Winter Olympics.

The original nine sporting events were: bobsleigh, curling, ice hockey, Nordic skiing, cross-country skiing, Nordic combined, ski jumping, and skating (both figure skating and speed skating). More events have been added over the years and today there are fifteen: Alpine skiing, biathlon, bobsleigh, cross-country skiing, curling, figure skating, freestyle

skiing, ice hockey, luge, Nordic combined, short track speed skating, speed skating, skeleton, ski jumping, and snowboarding.

An event that never made the final cut was Scandinavian skjoring. This event appeared as a demonstration in the St Moritz Winter Olympics in 1928 and involved competitors on skis clutching reins attached to a wooden harness, fitted to a horse.

Then in 1932 at the Lake Placid Winter Games, sled dog racing was showcased. I rather wish they'd kept that one in, don't you?

Of course, a Winter Olympics relies heavily on snow. In 1964 in Innsbruck, Austria, there wasn't

enough of it and the games nearly didn't go ahead! Fortunately, the Austrian army came to the rescue, transporting 20,000 blocks of ice from the mountains to the bobsled and luge track, and 40,000 cubic meters of snow to the Alpine skiing courses. Then as soon as the Winter Olympics



ended (of course) Innsbruck received one of its heaviest snowfalls for years!

Norway is the country that really punches above its weight at the Winter Olympics. It only has a population of five million (London alone has nearly nine million!) but to date has won 368 medals (132 gold, 125 silver, and 111 bronze) – way ahead of their nearest rivals, the United States, who have 305 medals and a population of 329 million!

Whether skiing, bobsleighbing or the figure skating is your winter sport of choice, pour a hot chocolate or a gluhwein and curl up under a blanket and enjoy all the action.



## We are recruiting for our Business to Business Marketing Agency



- Telephone Interviewers & Lead Generators
- Excellent rates of pay (well above min wage)
- Bonus scheme, earn extra each month!
- 32 days holiday per year
- 2 weeks off at Christmas
- A day off to celebrate your birthday
- Life Insurance + health + wellbeing package
- Company pension
- Fun exciting friendly and professional environment

**Call** Recruitment on 0121 251 3000 or  
**Email** C.V to ed.g@teamtelemarketing.co.uk

Next to David Lloyd  
on Cranmore Boulevard



# C. STEVENS ROOFING

## EST FAMILY BUSINESS

NEW TILED ROOFS • GUTTERS  
FLAT ROOFS • BRICK WORK  
LEADWORK • SMALL REPAIRS  
UPVC FASCIAS • CHIMNEYS



KNOWLE

SOLIHULL

**01564 790008 0121 733 1276**

**WWW.CSTEVENSTEROOFING.CO.UK**

# useful numbers

Shirley Lions Club 0345 833 9547

## Health

NHS non-emergency 111

Grove Surgery 0121 705 1105

Northbrook Group Practice 0121 746 5000

Hobs Moat Medical Centre 0121 742 5211

Solihull Hospital 0121 424 2000

Spire Parkway Hospital 0121 704 1451

Daleswood Health, Solihull 01675 489489

## Council

Solihull Council 0121 704 6000

## Utilities

Electricity power cut 0800 6783 105

Gas leak 0800 111 9999

Severn Trent Water 024 7771 5000

Severn Trent Water (emergencies) 0800 783 4444

## Travel

National Rail Enquiries 03457 48 49 50

Network West Midlands (buses) 0345 303 6760

## LOCAL COUNCILLORS

### SOLIHULL / SILHILL

#### Mike Gough

Tel: 07480 253181

Michael.gough@solihull.gov.uk

#### Peter Hogarth MBE

Tel: 0121 705 5455

phogarth@solihull.gov.uk

#### Wazma Qais

Tel: 0121 709 3404

wazma.qais@solihull.gov.uk

### ST ALPHEGE

#### Stuart Davis

Tel: 01564 776293

sdavis@solihull.gov.uk

#### Joe Tildesley

Tel: 0121 705 3086

joetildesley@solihull.gov.uk

#### Kate Wild

Tel: 07917 550 644

kawild@solihull.gov.uk

**Councillor surgeries** these are face-to-face meetings held by councillors for local people to raise issues in their area. Held at The Core Library, Solihull on the first and last Saturday of the month, 10am – 12 noon.

## local police contact for Solihull

Solihull police station

Telephone: 0845 113 5000



**Car Services**

8	AP Alloys	07972 852758
10	Chips Away	07479 250200
11	Crossroads Service Station	01564 703225

**Care services**

18	Home Instead	01564 330395
19	Dovehouse Court	0121 709 2339
29	Belmont @ Home Care	0333 444 0121

**Cleaning Services**

25	Sol Clean	0121 369 0070
38	Rejuvenate	07544 384 041

**Doors & Windows**

16	Clearly Better Windows	0800 048 5223
----	------------------------	---------------

**Events**

26	Nailcote Hall	024 7646 6174
----	---------------	---------------

**Fireplaces**

14	Woodglow Broughton	0121 707 2306
----	--------------------	---------------

**Gardens and Drives**

9	Solihull Tree Care	0121 604 6809
10	R&A Landscapes	07411 619228
22	Dimension Landscape & Driveways	0121 733 1463
35	Central Drives & Landscapes	0121 702 1456

**Graphic and Website Design**

34	Hot Lobster Design Ltd	0121 369 1977
----	------------------------	---------------

**Health and beauty**

2	Boucle	www.boucle.co.uk
7	MUMS	0121 704 2669

**Jobs**

31	Team Telemarketing	0121 251 3000
----	--------------------	---------------

**Kitchens**

13	Dream Doors	0121 744 8974
----	-------------	---------------

**Restaurants**

5	Monsoon	01564 829200
---	---------	--------------

**Roofing**

1	N Bird & Son	0800 195 6946
11	Deluxe Roofing	0800 747 1461
18	React Roofing	07922 230477
31	C Stevens Roofing	0121 733 1276

**Security**

20-21	Damar Security Systems	0121 706 8666
-------	------------------------	---------------

**Shopping**

3	Gina Lou Bridal	www.ginaloubridal.com
37	The Ironmongers	0121 643 4900
37	Enfield Sports	0121 716 1410

**Solicitors**

15	Shakespeare Martineau	0121 705 8151
----	-----------------------	---------------

**Sports**

14	SoccerPots	www.soccerpots.co.uk
37	Enfield Sports	0121 716 1410

**Taxi Services**

40	A2B Radio Cars	
----	----------------	--

**Travel Agent**

16	Not Just Travel	07565 534524
----	-----------------	--------------

**Wedding dresses**

3	Gina Lou Bridal	www.ginaloubridal.com
---	-----------------	-----------------------

7	4	9	8	3	5	6	1	2
1	2	8	7	4	6	3	5	9
5	3	6	1	2	9	7	4	8
3	7	1	9	5	4	2	8	6
6	8	5	3	1	2	9	7	4
2	9	4	6	8	7	1	3	5
8	5	7	2	9	3	4	6	1
4	6	2	5	7	1	8	9	3
9	1	3	4	6	8	5	2	7

**Sudoku Solution**

from page 27

G	L	A	S	S	E	S	A	N	K	L	E
I	B	E	E	O	R	H	T				
A	T	O	N	E	D	E	C	E	A	S	E
N	L	I	T	H	K	R					
T	R	I	A	N	G	U	L	A	T	I	O
S	G	M	E								
E	C	H	O	E	S	F	O	S	S	I	L
N		Y	S	L	P						
C	O	N	F	E	C	T	I	O	N	E	R
H	E	D	A	G	C	A					
A	I	R	P	O	R	T	I	S	T	I	N
N	V	G	U	S	R	K					
T	I	E	R	S	E	N	T	R	A	P	S

**crossword Solution**

from page 27

**Solution to Mind benders**

1. Cars
2. Jungle Book
3. Tangled

**mindbenders**

from page 16



Does your website  
look old, dated and you're  
not sure what to do?



hotlobster design offers you up-to-date  
websites to replace your tired ones.

Bespoke content managed websites are cheaper than you think.  
Call now for a chat about your website, social media & marketing needs.

hotlobster   
design • marketing • web • print

0121 369 1977

[www.hotlobster.uk.com](http://www.hotlobster.uk.com)



*Central Drives Landscapes*

**Why not invest in a new driveway or patio to enhance the appearance and add value to your property?**

**Approved Drives and Landscapes offer a range of services to help improve all areas of your home, including:**

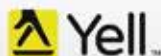
Clay & Block Paving - Tarmacing (red or black) -  
Patios - Brickwork - Slabbing - Gravel -  
Landscaping - Fencing - Property Repairs  
Roofing Repairs - Driveway Maintenance  
(Pressure cleaning & sealing - weed free)

**Proud member of**



**Find us in/on**

**Google**



**[www.centraldrivewayslimited.com](http://www.centraldrivewayslimited.com)**

**Get in touch today for a FREE quotation**

**T: 0121 702 1456 M: 07748 577687**

**[Michael.central@icloud.com](mailto:Michael.central@icloud.com)**



# To Reverse Ageing Think Blue

## What are Blue Zones and what can they teach us about ageing?

**A**s a nation we're obsessed with ageing. We try to turn the clock back with lotions, potions and sometimes Botox and fillers. Yet some nations seem to have solved this issue without resorting to cosmetics or surgery. These people live in the world's so-called Blue Zones. The term 'Blue Zones' refers to geographic areas in which people have low rates of chronic disease including heart disease, diabetes, dementia, and several types of cancer, and enjoy life spans more than a decade longer than people elsewhere in the world. The concept of Blue Zones grew out of the work done by researchers Gianni Pes and Michel Poulain.

The five Blue Zones are:

Ikaria in Greece, Okinawa in Japan, The Ogliastro Region in Sardinia, Loma Linda in California (which boasts the highest concentration of Seventh Day Adventists in the US), and the Nicoya Peninsula in Costa Rica.

Dan Buettner, who is an author, explorer, educator, and endurance cyclist, studied these regions intensively and concluded that the inhabitants all shared certain characteristics.

They exercise – but not at the gym, and they don't run. Instead, they live in environments that encourage movement. They walk, garden, and tend to use manual tools rather than electric ones, when working in the house and garden.

They live with purpose - The Okinawans call it *ikigai* and the Nicoyans call it *plan de vida*; both roughly translate to "why I wake up in the morning." A sense of purpose adds several years to your life span.

They take time out – Everyone, even those

living in Blue Zones experience stress. Stress is the leading cause of chronic inflammation and is associated with every major age-related disease. The Blue Zone populations understand how to deal with and diffuse that stress. Okinawans take a few moments each day to remember their ancestors, Adventists pray, Ikarians take a nap, and Sardinians do happy hour!

They follow the 80% rule - The Okinawan's have a 2,500-year-old Confucian mantra, 'Hara hachi bu', which they recite before meals. It reminds them to stop eating when their stomachs are 80% full. The 20% gap between not being hungry and feeling full could be the difference between losing weight and gaining it. People in

the Blue Zones eat their smallest meal in the early evening, and then they don't eat any more for the rest of the day.

They eat a plant-based diet - The people of the Blue Zones eat mainly plants and beans, limiting meat to small portions a few times per month.

They drink moderately

– Apart from the Adventists, all the people living in the Blue Zones drink alcohol regularly. Moderate drinkers actually outlive non-drinkers. So, keep to one to two glasses a day, preferably drunk with a meal and with friends or family

They have a community - The world's longest-lived people chose - or were born into - social circles that support healthy behaviours. For example, Okinawans created *moais* - groups of five friends that committed to each other for life. Research shows that smoking, obesity, happiness, and even loneliness are contagious, so healthy social networks are essential for long life.

So, if you are interested in living a longer, and healthier life...think blue!



# THE IRONMONGERS

## HOME & GARDEN BARGAIN CENTRE

★ Bits, Bobs, Odds & Sods and 'A LITTLE OF WHAT YOU FANCY' ★

7 DAYS  
A WEEK

FREE  
PARKING



### OUTSIDE:

Pet Care / Bird Food and Tables /  
Dog Treats and Leads / Compost /  
Gardening / Pest Control / Plant Pots /  
Cycle Accessories



### GIFTS:

Gift Cards / Wrapping Paper / Gift Bags  
/ Giftware / Soda Streams / Gadgets /  
Vehicle Care

### DIY:

Hand and Power Tools / Nuts, Bolts,  
Screws and Fixings / Glue / Sealants  
/ Hoses / Locks and Security / Car  
Accessories



### HOUSEHOLD CARE:

Oils / Polish / Cloths / Household  
Cleaners / Washing Lines / Drain  
Cleaners & Rods / Incinerators /  
Kitchenware / Needleware



Come along and browse around, we're at the lower end of Beckett's Farm Complex,  
near to American Golf and the Car Wash. Lots of free parking and a smile!

**1C Beckett's Farm, Wythall, B47 6AJ 0121 643 4900**

**homegardenbargains.co.uk**  **homegardenbargains.com**

# ENFIELD SPORTS

R  
F  
D

Britains Biggest and Brightest Shooting Store

All types of Shooting Supplies: Cartridges, Metallic Ammunition,  
Pellets, Archery, Shotguns, Airguns, Full Bore. Country Clothing,  
Footwear and Outdoor Apparel.



Free Parking! Open 6 days a week - Monday to Saturday.

Beckett's Farm, B47 6AJ | [www.enfieldsports.com](http://www.enfieldsports.com) | 0121 716 1410





REJUVENATE CARPET CLEANING  
&  
JET WASH SERVICES LTD  
FIRST IMPRESSIONS LAST A LIFETIME

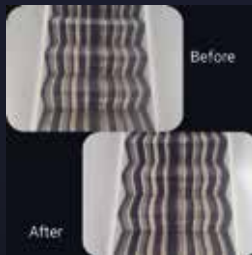
## JET WASHING & RE-SANDING

GET YOUR OUTSIDE SPACE IN SHAPE, DRIVEWAYS, PATIOS, PATHS AND MORE. WE CAN RE-SAND FOR YOU OR PROVIDE THE SAND FOR YOU TO DO YOURSELF, ITS PRETTY EASY, WE'LL TELL YOU HOW.

## CARPET & UPHOLSTERY CLEANING

USING A SPECIALISED SHAMPOO EXTRACTION CLEANER WE CAN REJUVENATE THOSE CARPETS AND GET THEM SMELLING FRESH, STARTING AT JUST £40 PER ROOM.

**cleansmart**  
trained technician



07544 384 041



REJUVENATEJETWASHSERVICES@OUTLOOK.COM



REJUVENATEJETWASHSERVICES.CO.UK

**10% OFF**  
FOR NHS,  
POLICE,  
FIRE AND  
OVER 60s

# Belmont @ Home provides bespoke home care services designed to fit perfectly to each individual.



**For those who still wish to have their own familiar front door and stay at home safe in the knowledge someone is there to care, Belmont @ Home offers at home care services.**

Unlike other home care services, Belmont @ Home care services are not rushed. Every individual benefits from the care team's time, attention, and care, no rushed visits, no clock watching,

just time for dedicated service.

At home care services should adapt to each individual need, mood and daily, weekly plans.

From personal care, organisation of social activities, attending to daily admin, housekeeping and preparing meals, or acting as chaperone to appointments, Belmont @ Home is there to support you!

## Belmont @ Home care services flex to each individual because every day is different



**Your first step towards personalised home care services starts with a free no obligation conversation with a Trusted Assessor to learn more about you and your needs.**

**To receive an initial assessment call us on 0121 295 8905**



Because every day is different, Belmont @ Home will work to your needs and aspirations.

**[www.belmonthealthcare.co.uk](http://www.belmonthealthcare.co.uk)**

☎ 0121 295 8905

✉ [homecare@belmonthealthcare.co.uk](mailto:homecare@belmonthealthcare.co.uk)

Join us for tailored home care services uniquely designed for you and your life.

# A2B

## RADIO CARS

**Book faster,  
download  
the app!**

**Scan here:**



**Now includes Go Carz  
Shropshire & West Midlands!**



## App features

- 1 Priority booking
- 2 Book in just 3 taps
- 3 Track your car
- 4 Easy payments
- 5 Digital gifts



a **veezu**. company