

# the solihull index

a community magazine and business directory  
for residents of solihull delivered FREE to 5700 homes

[www.solihullindex.com](http://www.solihullindex.com)

## JUST IMAGINE YOUR NEW BESPOKE GARDEN STORE WORKSHOP or SUMMERHOUSE...



...OR BETTER STILL, COME ALONG TO WARWICKSHIRE'S  
MOST IMPRESSIVE SHOWSITE AND SEE FOR YOURSELF  
OUR EXTENSIVE RANGE OF QUALITY BUILDINGS



A family run business with over 30 years experience.  
Standard designs and sizes or a bespoke service - built just for you.  
A full range of Sheds and Workshops available.  
Visit our show site or BUY ONLINE!



## Heart of England

*Quality that speaks for itself...*

Next to Johnsons Coaches, Liveridge Hill, A3400 Stratford Road, Henley-in-Arden B95 5QS

Visit our website to see many more designs and styles  
**HeartofEnglandGroup.co.uk** or call **01564 792 900**





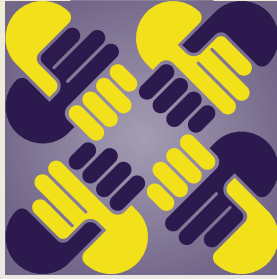
Chartered



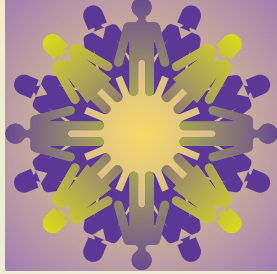
# JAMIESON CHRISTIE

## CHARTERED FINANCIAL PLANNERS

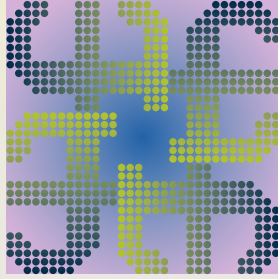
Trustworthy



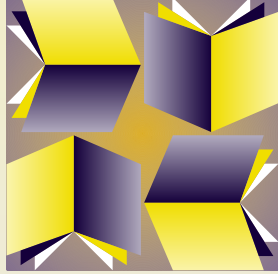
Experienced



Independent



Chartered



Providing expert help and advice to Companies, Individuals, Trustees and Charities.

- Pensions - Company and Personal
- Investments
- Tax Planning
- Long Term Care Planning
- Education Fees
- Employee Benefits
- Initial consultation is offered at our expense without obligation

Head Office:

Regent House, 430-432 Kenilworth Road,

Balsall Common CV7 7DN

Telephone 01676 532210 / 03300 505040

mail@jamiesonchristie.com

www.jamiesonchristie.com

Also offices in London, East Midlands and Staffordshire

Authorised and regulated by the Financial Conduct Authority.

*A financial advisory firm large enough to excel,  
small enough to care.*



**SOLIHULL**

**SUMMER FEST**

2019

OFFICIAL EVENT PARTNER



Birmingham  
Airport



27TH - 28TH JULY 2019  
TUDOR GRANGE PARK

**SATURDAY 27<sup>TH</sup> JULY 2019**

**LEVEL 42**

**THE VAMPS** **HEATHER SMALL** THE VOICE OF M PEOPLE

*Sugar Hill*  
**Gang**

*Ms* **DYNAMITE**  
**IMAGINATION**

FEATURING / LEE JOHN

**TREVOR NELSON**

**BLONDE**

DJ SET

— SUPPORTED BY MITCHELL BRUNINGS *JK AS* **ROBBIE** —

**SUNDAY 28<sup>TH</sup> JULY 2019**

**THE HUMAN**

**LEAGUE**

**THE PROCLAIMERS**

**GO WEST**

**BAD MANNERS**

SUPPORTED BY  
TRIBUTE ARTISTS

**MERCURY**  
— QUEEN TRIBUTE —

GARRY PEASE AS

*Rod Stewart*

FOR TICKETS VISIT: **WWW.SOLIHULLSUMMERFEST.CO.UK**

# Summertime...

As I sit writing this we're in the middle of a proper heatwave but who knows what the weather will be doing by the time this reaches you! Hopefully it's still warm and sunny so everyone can get out and about and enjoy themselves.

The Solihull Summer Fest is coming back to Tudor Grange Park on 27th-28th July and with acts such as Level 42 and The Vamps it's definitely worth getting your tickets booked.

There's lots of other great events coming up too, but not everyone gets to hear about them so check out page 6 for more information on Touchwood's Urban Beach and The Beech House's Garden Party. Just turn up and enjoy!

Until next month,

*Zoe*

**Zoe Reece**

**Tel: 07557 220585**

**Email: [zoe@dorridgedirectory.com](mailto:zoe@dorridgedirectory.com)**

**[www.solihullindex.com](http://www.solihullindex.com)**



## contents

**6** Local events

**26** Competition

**27** Puzzles

**31** Recipes

**32** Cinema and theatre guide

**34** Book Reviews

**35** Useful telephone numbers

**36** Index

**Locally designed by:** hotlobster design ltd **Printed by:** Norwood Press

**PLEASE RECYCLE THIS MAGAZINE**

# QUALITY KITCHEN MAKEOVERS

by simply replacing the doors and worktops

From the UK's #1  
Kitchen makeover experts.  
Visit our showroom now



**Before**



Est. 1999

- FREE SIMPLE DOOR REPLACEMENTS TO COMPLETE FITTED KITCHENS
- FULLY INSTALLED BY LOCAL PROFESSIONALS IN JUST A FEW DAYS
- CHOOSE FROM A LARGE SELECTION OF DOORS, WORKTOPS AND APPLIANCES
- 84 SHOWROOMS NATIONWIDE

## DO YOU DREAM OF A NEW KITCHEN?



Proud members of  
**9.7/10 Checkatrade.com**  
Where reputation matters

*See what our customers have to say*

## **DREAM DOORS®**

NEW LIFE FOR OLD KITCHENS

[www.dreamdoors.co.uk](http://www.dreamdoors.co.uk)

CALL US NOW FOR A FREE ESTIMATE:

## **0121 744 8974**

VISIT OUR SHOWROOM:

134 Stratford Road, Shirley,  
Solihull, B90 3BB



# community events

## Touchwood's Urban Beach

6th July – 24th August

Outside Core Theatre

Local residents will once again be transported to sun, sand and serenity as Solihull becomes awash with African vibes thanks to this year's safari theme! Throughout the summer, guests of all ages will be able to relax in the deckchairs, build sandcastles and enjoy a vibrant programme of activities and entertainment.



## Solihull Sort Of Jazz Festival

19-21 July

The much-loved Solihull 'Sort Of' Jazz Festival is back! Enjoy a great selection of bands on the main stage in Mell Square, and tingle your taste buds with a selection of foods from around the world at the accompanying Continental Street Food Market. Visit [www.solihullbid.co.uk](http://www.solihullbid.co.uk) for more details.



## Solihull Summer Fest

27th – 28th July

Tudor Grange Park

This 2-day festival in the heart of Solihull returns for the 4th year running and features a diverse mix of music genres. Each day runs from 12 midday until 10.30pm with live music, street food vendors, bars, entertainment and an exclusive VIP area.



## Jam Rock

2nd August

The Mason's Arms, Solihull

EL promotion & DJ Dubz (Static Sounds) bring you Night full of Good Vibes Only! Dropping the best in Reggae, RnB, Dancehall & Urban all in the heart of Solihull. Free entry.

## THE CORE LIBRARY

0121 704 6965

- **Councillor's Surgery** - these are face-to-face meetings held by councillors for local people to raise issues in their area. First and last Saturday of the month, 10.00am-12.00pm
- **Rhyme Time** - Wednesdays 10.15am to 10.30am. term-time only. A short interactive session for 0-2s that includes finger and action rhymes and songs. Come along and meet up with other parents/carers and discover what the library can offer your child.
- **Meet and Play** - Fridays 10.15am to 11.15am, age 0 - 2 years (term time only). Our new Meet and
- **Play session** offers the chance for young families to meet up, relax, chat, play, sing or make music together! The session is for families, led by families. Toys and musical instruments are provided. For more information contact 0121 704 6965.
- **Homework Club** - Tuesdays 3.45pm to 5.15pm, term time only
- **Silent Reading Cafe** - Held once a month on Thursday evenings, this is a chance to unwind and read in a cosy, informal environment without distractions. It begins with an hour of silent reading from 6pm with a chance to chat (if you want) between 7pm and 7.45pm.

## Garden Party

3rd August

The Beech House, Solihull

Free event, from 1pm, featuring gin & tonic bar, prosecco bar, outdoor food, DJ & live music.

BRING YOUR PARTY TO OUR PARTY!

# Enjoy Party Nights

in *Rick's* & *THE MARQUEE*  
at Nailcote Hall Hotel



## SEPTEMBER 2019

Fri 6th	BACK TO THE 70's PARTY with CHRIS NOTT	£32.50
Fri 20th	THE 'GEORGE MICHAEL' TRIBUTE SHOW with MICHAEL GEORGE	£32.50
Sat 28th	THE 'GREATEST SHOWMAN' PARTY with DAVID LAWRENCE and SHANE NOLAN BAND	£45.00

## OCTOBER 2019

Sat 5th	THE PINK BALL AT THE HALL with THE DETROIT DIVAS featuring Mr D SMOOVE	£45.00
Sun 6th	VINTAGE AFTERNOON TEA PARTY with STACEY LYNN	£25.00
Fri 11th	THE ULTIMATE 80'S PARTY with BRINGING ON BACK THE 80's	£37.50
Sat 19th	MOTOWN DIVAS SHOW with THE DREAMETTES	£35.00
Sat 26th	THE ELO BEATLES BEYOND PARTY with ELO BEATLES BEYOND	£35.00

## NOVEMBER 2019

Fri 1st	SWINGING 60's & MOTOWN PARTY with THE KRYSTALETTES	£35.00
Sat 9th	THE 'BEE GEES' SATURDAY NIGHT FEVER PARTY with STAYIN' ALIVE	£37.50
Sat 16th	THE 'MAMMA MIA' PARTY with BOOTLEG ABBA	£37.50
Sat 23rd	SOUL AND MOTOWN SHOW with NAT AUGUSTIN	£35.00
Fri 29th	THE FREDDIE MERCURY SHOW with BRUCE GAME	£32.50
Sat 30th	THE SNOWBALL CHARITY PARTY with TAKE@THAT	£45.00

## DECEMBER 2019

Fri 6th	THE ELO BEATLES BEYOND CHRISTMAS PARTY with ELO BEATLES BEYOND	£39.50
Fri 6th	THE SOUL AND MOTOWN PARTY with SOULTOWN COLLECTIVE	£45.00
Sat 7th	THE CHRISTMAS MOTOWN DIVAS SHOW with THE DREAMETTES	£39.50
Sat 7th	THE 'GREATEST SHOWMAN' PARTY with DAVID 'BARNUM' LAWRENCE and RANGATANG	£49.50
Fri 13th	THE XMAS 'MAMMA MIA' PARTY with BOOTLEG ABBA	£39.50
Fri 13th	THE 'HITS OF THE DECADES' PARTY with JARZINO	£45.00

TICKET PRICES INCLUDE 3 COURSE MEAL - WE WILL CATER FOR ANY SPECIAL DIETARY NEEDS BY PRIOR ARRANGEMENT

PLEASE VISIT OUR WEBSITE TO SEE FULL DETAILS

[www.nailcotehall.co.uk](http://www.nailcotehall.co.uk)

BOOKING HOTLINE CALL: 02476 466174



Nailcote Hall  
Hotel, Golf & Country Club

info@nailcotehall.co.uk  
Nailcote Lane, Berkswell, Warwickshire CV7 7DE

# Bathrooms Galore

Just add water...

Specialists in Bathroom Installation  
And Bathroom Design

The complete design and  
installation service from  
concept to completion



49 Stoney Lane, Yardley, Birmingham, B25 8RE

0121 783 9966

[www.bathroomsgalore.co.uk](http://www.bathroomsgalore.co.uk)



# Stephen Smith & Son Plumbing & Heating Services

**WORCESTER**  
Bosch Group  
Accredited  
Installer



Gas Safe reg no: 198187  
Natural Gas, LPG & Oil

**Which?**  
Trusted trader

**Tel: 0121 247 4957  
or 01564 200119**

**10 years Manufacturer's Warranty  
on all Worcester Greenstar  
gas boilers installed\***

[www.stephensmithandson.co.uk](http://www.stephensmithandson.co.uk)

**"Family business. Local and reliable."**

## Work carried out includes:

- Boilers / Radiators
- Natural Gas - LPG and Oil Installation and Repair
- Bathroom Installations
- Landlord Gas Safety Inspections/Certificates
- Boiler Servicing
- Hot Water Cylinders (vented and unvented)
- System Powerflushing
- Cold Water Tanks
- Shower Installations / Repairs
- Pipework
- Underfloor Heating

\*Worcester Bosch terms apply

**Tudor Rose Curtains**  
BESPOKE DESIGN

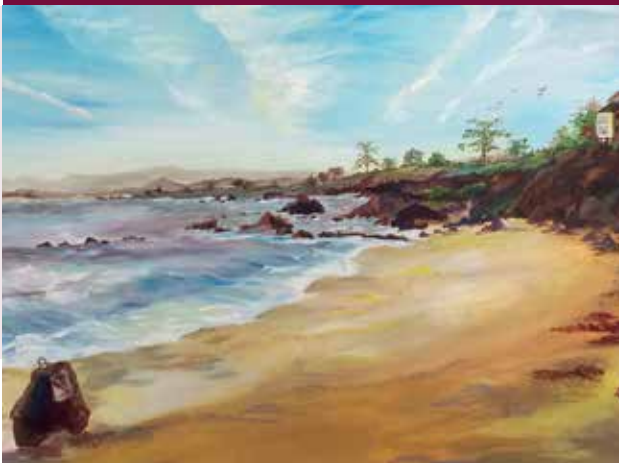


## Bespoke Home Accessories

- Curtains and blinds made to measure
- Bespoke chaise longue
- Commissions taken for oil paintings
- Unique designer woven cushions

Call Sarah to find out more:

**07518 851 063  
0121 445 2072**



[www.tudorrosecurtains.co.uk](http://www.tudorrosecurtains.co.uk)

[sj@tudorrosecurtains.co.uk](mailto:sj@tudorrosecurtains.co.uk)

# Dimension Groundworks & Driveways

Specialists in Driveways and Landscaping

- Block paving • Tarmacing (red or black) • Patios
- Brickwork • Slabbing • Gravel • Landscaping
- Fencing • Property & roof repairs
- Driveway maintenance  
(pressure cleaning & sealing – weed free)



**07961 358367 / 0121 652 0145 / 01926 674782**

**[dimensiongroundworks@icloud.com](mailto:dimensiongroundworks@icloud.com)**

**[www.dimensionpathways.co.uk](http://www.dimensionpathways.co.uk)**

**328 Alcester Road Wythall Birmingham West Midlands B47 6JR**

# Johnsons Cars

Trusted, Quality Service

**Johnsons Knowle should be your first stop when looking for a pre-owned vehicle.**



Every vehicle we sell has been sourced from within the Johnsons Group and checked over by one of our trained technicians, so you can have faith in the quality of each and every one of our vehicles on the forecourt.

Alongside our showroom on Station Road we also have a state-of-the-art workshop, offering a comprehensive range of aftersales services, from MOTs to fixed-price servicing on all models.

For Sales, Service or Parts enquiries call us today on **01564 454 051**, or if you're passing pop in for a coffee and one of our friendly team will assist you.

## Johnsons Cars

25 Station Road, Knowle, Solihull,  
West Midlands B93 0HL

Call us today on **01564 454 051**  
or visit us at [johnsonscars.co.uk/knowle](http://johnsonscars.co.uk/knowle)

Vehicles shown for illustration purposes only. Johnsons Dealerships LLP trading as Johnsons Cars (partnership No OC383295) is a subsidiary of Johnsons Cars Ltd, (registered in England No 3716766). Johnsons Dealerships LLP (Firm Reference Number: 512460), is an appointed representative of ITC compliance Ltd, which is authorised and regulated by the Financial Conduct Authority (their registration number is 313486).

# C. STEVENS ROOFING

**EST FAMILY BUSINESS**

NEW TILED ROOFS • GUTTERS

FLAT ROOFS • BRICK WORK

LEADWORK • SMALL REPAIRS

UPVC FASCIAS • CHIMNEYS



KNOWLE

SOLIHULL

**01564 790008 0121 733 1276**

**WWW.CSTEVENSTOOFING.CO.UK**



electrical  
services

Work carried out to  
approved standard



Rewires • Extra Sockets • Lighting • Showers  
Fault Finding • Domestic & Commercial



Tel: 0121 704 2654  
Mob: 07960 266271

Free Quotations | No Call Out Charge  
39 Broomfield Avenue, Solihull, B91 2NP

# sofafix



- No Mess, No Fuss
- 3rd Generation Upholsterer
- All Work Guaranteed for 3 years
- New cushions supplied and fitted
- All types of Furniture Repaired & Restored
- 1st Class, Professional Efficient Service

Proud members of  
**Checkatrade.com**  
Where reputation matters

**10/10**

**Tel: 0121 743 5116 | Mob: 07435 787739**

**[www.sofafixer.com](http://www.sofafixer.com)**



# Ready, Steady, MOW!

**Choose the right mower for your lawn.**

**R**egular mowing is the key to an attractive, green and healthy lawn. You'll need a mower, but which one should you choose?

**Small lawns** - Many suburban homes have tiny lawns. A manual push lawn mower or rotary mower is powered by you pushing it rather than by electricity. The blades are mounted in a cylinder, which revolves when the mower is pushed. This produces a precise, even mowing result. They tend to be very compact which makes them manoeuvrable and easy to store.

**Small or medium-sized lawn** - If your lawn is a little bigger or you don't fancy a manual mower, an electric lawn mower might be for you. They run from a power source and make light work of your lawn. Electric mowers for smaller lawns are usually very easy to manoeuvre around objects. Most come with a handy container or bag to collect clippings. They are also pretty quiet and are available in energy-efficient versions. Just be aware that even with a small lawn you will probably need an extension cord. It's wise to invest in a power breaker for safety. Accidents do happen.

**Larger lawn** - Petrol mowers are good bigger lawns, where an extension cord becomes impractical. These mowers are powerful, but also heavy as they are often quite sizeable. They are less environmentally friendly because of the exhaust emissions. If you have more than 500 square metres of grass, you'll probably be better off with



a ride-on petrol mower. All lawn mowers are available in various mowing widths. Generally speaking, **the wider the lawn mower, the quicker you'll get the job done.** But you need to consider that wider mowers are less manoeuvrable.

**As a rule of thumb** small lawns require a mowing width of around 29-33cm (11-13 inches); medium-sized lawns require a mowing width of around 38cm (15 inches).; large lawns may require widths larger than this, but all choices will depend on whether the lawn is ornamental, with features like ponds and trees, in which case a smaller mower might be better, or whether it's more of an open grassy space.

**Most mowers are height adjustable.** In other words, you can increase or decrease the distance between the blades and the ground to cut the grass at just the right height for you or the time of year.

**You can now buy mulching mowers.** These cut the grass clippings into tiny pieces and blow them evenly into the grass. This method has the advantage of preventing the soil from drying out and gives fungus less chance to develop.

**A strimmer** is a useful gadget for neatening up along walls, fences and the edge of flowerbeds. **You can get more powerful versions which will let you attack weeds too.** It's best to wear safety goggles when using one as they generate a lot of flying debris.

**By Tom Hancock**



**Why not invest in a new driveway or patio to enhance the appearance and add value to your property?**

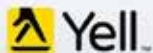
**Approved Drives and Landscapes offer a range of services to help improve all areas of your home, including:**

Clay & Block Paving - Tarmacing (red or black) -  
Patios - Brickwork - Slabbing - Gravel -  
Landscaping - Fencing - Property Repairs  
Roofing Repairs - Driveway Maintenance  
(Pressure cleaning & sealing - weed free)

**Proud member of**



**Find us in/on**



**[www.centraldrivewayslimited.com](http://www.centraldrivewayslimited.com)**

Get in touch today for a **FREE** quotation

**T: 0121 702 1456 M: 07748 577687**

[Michael.central@icloud.com](mailto:Michael.central@icloud.com)





**Land Rover Sports  
& Social Club**

## FORTHCOMING EVENTS

### ROD STEWART TRIBUTE AND THE FACEZ

**12th October 2019**

The original and still the premier tribute band to the very best of Rod Stewart and The Facez!

Hear all the classic Rod Stewart hits with a nod and a wink to The Facez with stunning musical and visual accuracy!

**Tickets online from [www.landroversc.co.uk](http://www.landroversc.co.uk)**



### THE AC30'S BAND

**9th November 2019**

The AC30's are a highly professional 7-piece band based in the Midlands with a vast knowledge of ska, rocksteady and reggae music. They play the songs of Ken Boothe, Desmond Dekker, Prince Buster, Jimmy Cliff, John Holt and many more.

**Tickets online from [www.landroversc.co.uk](http://www.landroversc.co.uk)**



CALL DURING OPENING HOURS TO PICK UP TICKETS FROM THE CLUB

Billmore Green, Solihull, B92 9LN • 0121 742 5490

# Win £500 of holiday vouchers

Sign up to my  
email newsletter at  
**[www.sabinaclay.  
notjusttravel.com](http://www.sabinaclay.notjusttravel.com)**  
for a chance to win.



**NOT JUST  
TRAVEL**



# The best home to be in is **your own**

**Home Instead Senior Care Solihull**

**Phone: 01564 330 395 | 01212 704 615**

**Website: [www.homeinstead.co.uk/solihull](http://www.homeinstead.co.uk/solihull)**

Each Home Instead Senior Care© franchise office is independently owned and operated. Copyright © Home Instead 2017.

**Home Instead**  
SENIOR CARE®  
*to us, it's personal.*

## Anguilla - a stunning island, a well kept secret!

**Anguilla** is 100 miles northwest of Antigua, 50 minutes by air but can also be reached from St Kitts & Nevis and British Virgin Islands. It is a British overseas territory with a wealth of culture, history, amazing beaches, fabulous restaurants and world class accommodation.

What I especially love about this fantastic place is it's simple sophistication and it remains uncrowded even in summer. **No large cruise ships stop here**, there are no all inclusives, no jet skis or chain restaurants.

You may be forgiven for thinking that doesn't sound great but it means that the local cuisine has thrived and is highly regarded throughout the Caribbean. **It oozes old style Caribbean heritage** and culture, with a passion for music and their national sport of boat racing.

**The beaches are exceptional and all 33 of them are public.**

Anguilla is the northernmost of the Leeward Islands. The island is flattish and rugged, 16 miles long and its widest point is 3 miles. It covers an

area of 35 square miles and the population is 14,750. It has so much to offer from sailing, kite surfing, scuba diving, paddleboarding, surfing to hiking, cycling, golf, yoga and birdwatching.

**Anguilla has 6 offshore cays** which are uninhabited but easily reached by boat where you can indulge in BBQs beach shack dining, go on nature based tours or even enjoy snorkelling.

**The official language is English**, it's 4 hours behind UK, no visa requirements and the currency is the Eastern Caribbean dollar but US dollars are widely accepted too.

There is so much I could tell you about this island but I need a few more pages! If you would like to know more **please don't hesitate in emailing me.**



**Sabina Clay**  
Not Just Travel  
sabina.clay@  
notjusttravel.com  
07565 534 524





# The Women of Wimbledon

## Home-grown champions from the past

**T**he Championships, Wimbledon is the most famous tennis event in the British sporting calendar. It was first contested in 1877 and played on outdoor grass courts at the All England Lawn Tennis and Croquet Club (AELTC) in the Wimbledon suburb of London, United Kingdom.

## The Ladies' Singles tournament began

**in 1884**, and the women's game has developed massively over the last century. We are all familiar with the incredible Williams sisters, but our own Nation has a pretty impressive history in the Women's singles, which is often overlooked by the British media.

**Dorothy Round Little** won her first title in 1934 — the same year as her British male counterpart Fred Perry also won his first. She won her second Wimbledon title at age 29 in 1937. A devout Christian, she often refused to play on Sundays. She published two books, *Modern Lawn Tennis* and *Tennis For Girls*. After her retirement in 1939 she worked as a coach, journalist, and president of the Worcester Lawn Tennis Club.

## Florence Angela Margaret Mortimer

**Barrett** beat another English player Christine Truman Janes to become Wimbledon's women's singles champion in 1961. She was aged 29 and partially deaf.

**Ann Haydon-Jones** had already won the French Open and U.S. Open twice before winning Wimbledon in 1969. She first showed her talent as a young girl. Her father was a table tennis champion and he encouraged her competitive spirit. She played the famous



**Billie Jean King** several times but never beat her until her win at Wimbledon. **Haydon-Jones** was also the first left-handed female singles player to win the championship.

**Virginia Wade** was a maths graduate, famed for her powerful serve. She defeated **Billie Jean King** at the US Open, earning her first Grand Slam title. She went on to win the Australian Open in 1972, and in 1977, nearly a decade after her first victory, Wade would become Wimbledon's last British singles winner for 36 years. The year she won, defeating Dutch player Betty Stöve at Wimbledon was the Queen's Silver Jubilee and Queen Elizabeth II herself was present to enjoy her victory.

It remains to be seen whether current British number one **Johanna Konta** can better her semi-final performance in 2017 to add her name to the list of amazing female British tennis players who have held the Wimbledon trophy aloft.

**By Tracey Anderson**



# CROSSROADS SERVICE STATION LTD

A friendly, family-run business since 1969

- MOT Testing – Cars & Motorbikes
- Servicing & Repairs
- Air Conditioning Service & Repair
- Diagnostic Service & Repair
- Laser Wheel Alignment
- Tyres – Supplied & Fitted
- Qualified & Experienced Staff
- Courtesy Car or Collection/Delivery available

**OPEN 6 DAYS**

**A WEEK**

MON – FRI 7.30am – 6pm

Sat 7.30am – 1pm

**MOT's while you wait!**



**599-601 Tanworth Lane, Shirley, Solihull B90 4JE**

**Tel: 01564 703225**

**www.crossroadservicestation.co.uk**

VAT No.: 113213041

**GAROLLA**  
**ROLLER**  
**SHUTTER**  
**DOORS**



**Great For:**  
Space Saving  
Kerb Appeal  
Ease of Use

**0800 468 1982**

## THERMALLY INSULATED ELECTRIC GARAGE DOORS



CE Approved

Acoustic & Thermal  
Insulation



Brush Sealed Rails



Pay on Completion



Two Remote Controls



18 Colours Available



Free Disposal of your Old Door!

**Garolla** saves you space inside your garage as the Garage Door rolls vertically into a box. This design requires just 8 inches of headroom and allows you to park closer to the door. Remotely control the Door from the comfort of your car with a hold-to-run remote.

**LIMITED OFFER - was £1354**

**NOW ONLY £895**  
INC. VAT & FULL FITTING

MADE TO MEASURE, CALL US TODAY

**Save  
£459**

**01564 340 028**

**Phone Lines Open 7 Days a Week**

**07537 149 128**



- Offer valid for openings up to 2.6m wide & inc: 2 Remote Keys, 55mm White slats, Internal manual Override -

# AP ALLOYS

MOBILE ALLOY WHEEL REPAIRS

*Mobile service to your  
home or business*



## ALLOY WHEEL REFURBISHMENT

*(Full Face of Wheel)*

Vandal Scratches - Plastic Bumper Damage  
Dents + Scrapes to any panels - Stonechips  
Machine Polishing - Paint Protection Treatments Applied  
FREE Quotations - Main Dealer Approved

Call Andy now for a fast, prompt and professional service

# 07972 852 758



Helping You Afford

## VW Golf GTD



**Special Offer £420 pm**

Your Next Vehicle.

## Audi A3 TDI



**Special Offer £211 pm**

**No Deposit! Inclusive of FREE Servicing and MOT's!**

## Ford Transit Custom



**Special Offer £247 pm**

## Ford Fiesta 1.2



**Special Offer £175 pm**

**No Need to worry about CCJ's or Bad Credit!**

Visit **www.easyleasecars.co.uk**

To Find Out How or Call Us Now on 0121 693 0573

## 5 Tips for Choosing a Professional Carpet Cleaner

By Karen Campbell

**Cheap is rarely best** - However attractive saving a few quid might seem, the least expensive option might actually do more harm than good. Companies that offer heavily discounted prices may use substandard cleaning products that could permanently damage your carpets.

**Know the Process** - Ask questions to help you decide who to use. How long will the drying time be? Some may use stronger detergents while others might use more environmentally friendly options...

**Do your research** - Talk to friends and family, check review sites, ask for recommendations on social media.

**Ask about additional services** - And additional costs. Will they move the furniture? How do they manage difficult-to-reach areas? Are they insured?

**Keep it local if possible** - A local carpet cleaning company will have a vested interest in keeping you happy. It's in their best interest to offer a high-quality service at affordable rates to ensure customer retention and recommendation.



### PRO LINE

PROFESSIONAL LINE UK LTD

#### REPLACEMENT PVCu FASCIAS & GUTTERS

##### IT'S THE ONLY PROPER WAY

Don't be fooled by cheap prices! Capping over existing Fascias will ruin your home! It causes sweating, will rot away your old boards and eventually put dry rot through your roofing timbers.

Don't be fooled by those who say they cut rotten wood first, and then cap over.  
OLD WOOD WILL ROT, NO MATTER WHAT!

CALL NOW FOR OUR JULY & AUGUST DEALS

We promise to beat any genuine quote!

TEL: 0121 314 4390 MOBILE: 07776 287035

I will call, survey and explain exactly what the installation entails, with no obligation on your part. We would however be pleased to quote you for any additional areas. If you have had new Gutters & Down Pipes in the last ten years, it is possible to refit them afterwards.

Central Boulevard, Blythe Valley Business Park, West Midlands, B90 8AG

We also install Windows, Conservatories, Porches, Cavity Wall Insulation, Felt & Flat Roofs



# D.A. MANDER & SON Ltd

## PROFESSIONAL FITTER AND SUPPLIER OF QUALITY CARPETS

*Don Mander does not have retail premises. If you need him  
please call him direct– the only way to buy carpets*



### EASIER

*Than walking round  
lots of shops*

### ACCURATE

*See colours in their  
true light*

### CONVENIENT

*View in the comfort of  
your own home*

*Really pleased with job done by Don and family to  
install our hall, stairs and landing carpet, quick,  
knowledgeable and professional, wish we had found  
them sooner! Would highly recommend.*

**Claire Price, Solihull**

*For the best carpet fitters in the UK look no further  
than Don, Davina and Luke Mander. Experts in  
their field, trustworthy and extremely knowledgeable.  
No job is too big or too small. They carried out a  
repair job on our stair carpet which had been  
ruined by the cat. It is now as good as new.*

**Carol Tromans, Solihull**

# 01564 700200

*We can uplift and remove existing carpets and move furniture*

**Mobile: 07976 778694**

**FREE ESTIMATES**

*91 Longdon Road, Knowle B93 9HT*

**See our reviews at**

**Freeindex.co.uk,**

**Yell.com and Google**



# Wi-Fi Woes

## How to boost the wi-fi signal in your home's weak spots

Recently a friend of mine decided to convert his garage to a games room. The big screen TV was to be the main feature. We all gathered for the big turn on to experience Netflix in full ultra HD. But all we got was a blocky, stuttering, unwatchable excuse for entertainment.

It turned out that his wireless router (the bit that connects to his broadband) was plugged in at the opposite end of the house. The reception at this end of the house had always been poor, but the extra wall of the garage was just too much for the signal to push through. Result? **No internet!**

**What to do?** The router had to stay by the phone socket so moving that to the centre of the house wasn't an option. Running a network cable (a permanent wire) from the router to the TV was a non-starter because it would involve a lot of work. This meant he had to work out a different way to boost the **Wi-Fi** signal in the garage.

I'd had a similar problem in my home and had discovered **Wi-Fi** extenders and repeaters (different companies call them by different names, but they all do the same thing).

### There were two options:

A **Wi-Fi** repeater is basically a second router. You put it where you receive a good signal and it then creates a new **Wi-Fi** area that connects to your broadband. He could have sited that



in the centre of the house and thus improved the signal in the garage. There would be a bit of setting up to get this working as you have to log on to the repeater with a computer, but it's not hard if you know what you're doing. There are YouTube tutorials which can help.

**The second option is the simplest**, and ultimately the one he settled on – a powerline adaptor. This is a box that plugs into your router and then into a mains socket. It actually uses your house wiring to send your broadband signal around the house. All you need to do is buy a powerline **Wi-Fi** extender and plug it into the wall in the room where you need it most. It's like you're sitting right beside your **Wi-Fi** point.

After a quick visit to the shops, he plugged in both devices. The set-up was quick and easy (literally pressing two buttons) and he was up and running with full broadband speed. His teens could now get Youtube in the garden as an extra bonus because he put an extra extender in a socket on the wall next to the patio.

**By Mark O'Keefe**

# PRESTIGE

## MULTI TRADES LTD

complete professional property renovation  
and maintenance services



**“From a new roof to a dripping tap,  
to installing a cat flap”**

**CALL FOR A QUOTE**

**HANDYMAN SERVICE**  
**NOW AVAILABLE**

---

Flat Roof Repairs and Recovering Specialist | UPVC  
Windows | Doors, Soffits, Guttering | General Property  
Repairs and Property Maintenance | Decorating | Carpentry  
| Plumbing | Plastering | Brickwork and much more...

**We have been working within your area for over  
25 years solving your maintenance puzzles**

**[www.prestigemultitrade.uk](http://www.prestigemultitrade.uk)**  
**[a1prestigeprop@aol.com](mailto:a1prestigeprop@aol.com)**  
**0121 745 3359 | 07886 922 280**

# COMPETITION



## WIN 2 TICKETS

**to see Barnhart & Huxley Hot Five – Jazz and Jokes IV**

**on Sunday 15th September at 2.30pm**

**The Core Theatre, Solihull (formerly Solihull Arts Complex)**

For your chance to win these tickets, visit the Core Theatre website page for this event - [www.thecoretheatresolihull.co.uk](http://www.thecoretheatresolihull.co.uk) - to find the answer to this question:

**Who's hosting this event?**

Email your answer to: [thecoretheatre@solihull.gov.uk](mailto:thecoretheatre@solihull.gov.uk) – and please put 'Jazz and Jokes' as the subject line.

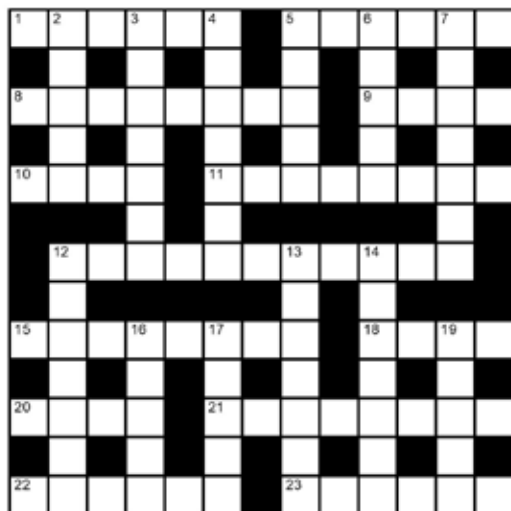
**Closing date for entries is 15th August. The winner will be drawn at random and notified by email after this date.**

**Please note there is no cash value nor exchange for this prize so please don't enter if you cannot attend the date shown above.**

### **About the show:**

Thrill to the sounds of Vintage Jazz and Swing with this latest version of the Barnhart-Huxley Hot Five, featuring the blistering trumpet and swinging vocals of London jazz legend Enrico Tomasso. Rico and George Huxley will create the hottest combo since Louis Armstrong met Sidney Bechet! Add flautist/vocalist Anne Barnhart for some sass and class, the ebullient Jeff Barnhart channelling Fats Waller as he strides across the keys, and Graham Smith, the most in-demand drummer in the Midlands, and you have an evening of jazz and hilarity to remember for ages to come!

## crossword



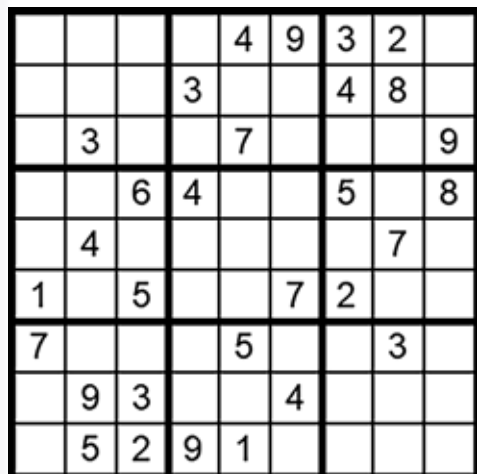
## clues

### Across

- 1 Academic essay (6)
- 5 Violent quarrel (4-2)
- 8 Teaching (often privately) (8)
- 9 Deliberately disobey (4)
- 10 Fix (4)
- 11 Lovingly (8)
- 12 Candidates, participants (11)
- 15 Tubular pasta (8)
- 18 Tiny rodents (4)
- 20 Flightless bird (4)
- 21 Pads used for washing pans (8)
- 22 Alcove (6)
- 23 Sunny colour (6)

### Down

- 2 Abode, dwelling (5)
- 3 Highest Welsh mountain (7)
- 4 Bowling pin (7)
- 5 Commenced (5)
- 6 Grass-like plant (5)
- 7 Open or spread out (7)
- 12 Deadly poison (7)
- 13 Three-book story (7)
- 14 Figure, digit (7)
- 16 Not dead (5)
- 17 Desert waterhole (5)
- 19 Ship's freight (5)



## how to play sudoku

### It's simple!

Fill in the grid so that each row, column and 3x3 box, contains the numbers 1 through to 9 with no repetition. You don't need to be a genius. These puzzles use logic alone. Watch out! Sudoku is highly addictive.

**answers on page 46**





# **EH Smith** KITCHENS & BATHROOMS

**Kitchens & bathrooms  
to suit any style  
& budget.**

LAURA ASHLEY

**Roca**

Symphony®

 **JEFF**

Utopia



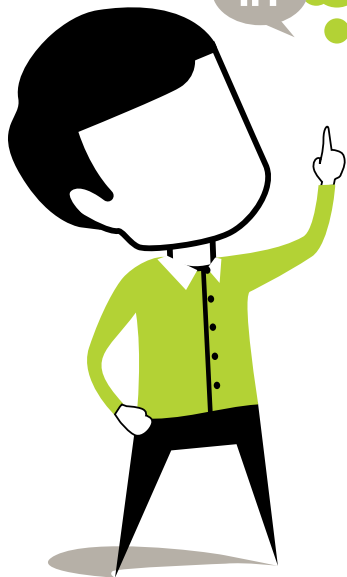
**Expert  
advice**

**Site  
Surveys**

**CAD  
design**

**Book your appointment today...**  
**Haslucks Green Rd, Solihull**  
**Call 0121 713 7100**

Think Social Media.  
Think Management.  
Use Hotlobster.



#### What Hotlobster offers you:

- ✓ Social Media Management
- ✓ Responsive Website Design
- ✓ Graphic Design
- ✓ Branding
- ✓ Marketing
- ✓ Print Production
- ✓ Good Coffee!



hotlobster  
design • marketing • web • print

[studio@hotlobster.uk.com](mailto:studio@hotlobster.uk.com)

**0121 369 1977**

[www.hotlobster.uk.com](http://www.hotlobster.uk.com)

# A-head of the Game

By Sarah Davey

## Choose the perfect Hat

**W**eddings, Race events, Polo; there are many opportunities throughout the summer to wear a hat, but which one should you choose? How do you avoid making an **expensive mistake**?

First you need to look at your face shape. Oval-shaped faces can get away with almost any style. A large brimmed hat should be tilted backwards slightly so that it frames your face. If you have a square or round face, choose a hat with a large brim and wear it slanted. A long face looks lovely with a beret style or even a Matador style

**Glasses can be a bit tricky** but choose a hat with an upturned brim style so that it doesn't feel like you are hiding behind a lot of face furniture!

**There is a bit of an art to hat wearing.** You need to think about your hairstyle. Hair should complement the hat. Hats nearly always look better worn with hair up, because it accentuates the neck. Small hats should rest just above the eyebrow, they look wrong perched on the very top of the head. If in doubt, ask the stylist in the shop. They will be trained to help you choose the right piece and talk you through how to wear it to best effect.

**Try lots of styles,** colours and textures. Make the most of trained staff. Let them be your guide. They will get a kick out of finding exactly the right hat for you. Don't shy away from 'big' hats because they generally look smaller once they are actually on your head

**Most people start with an outfit and try to find a hat to complement it.** But it might be better

to do it the other way around. If you fall in love with a hat that's a real statement piece, then you should keep your dress and accessories minimal to allow it to take centre stage. If you've already got the outfit though, then pick out elements such as colour or fabric, to try and match. **Exact matches are not necessary,** sometimes complementing tones work better.

If you are very lucky you might have a dress and hat hire establishment in your town. This can be an excellent way to get the outfit and hat of your dreams for a fraction of the cost of buying it outright.

**At the end of the day you have to feel happy, confident and comfortable in your chosen hat.** Physical comfort is the most important factor. You shouldn't pick anything you feel you have to fuss or fidget with; you should feel completely confident. As the hat designer Piers Atkinson says, "Make sure the hat doesn't wear you; you wear the hat!"



# Raspberry Ripple Ice Cream

**July is National Ice Cream Month. Celebrate with this homemade raspberry ripple.**

**Preparation time: 20 mins**

**Cooking time: 10 mins**

**Serves: 12**

## Ingredients

250g raspberries  
225g caster sugar  
2 large eggs  
4 egg yolks  
600ml double cream  
Raspberries or other fruit for serving

## Method

Place the raspberries in a pan with 2 tbsp of the sugar. Cook on a medium heat until sugar dissolves into the pulp. Simmer for 5 mins until thickened, then push the pulp

through a sieve into a bowl and discard the seeds. Place the eggs, egg yolks and remaining sugar into a bowl. Whisk with an electric whisk hand whisk to combine everything, then place over a pan of gently simmering water – the bowl should not touch the water. Beat with the electric whisk for 3-4 mins until thick and pale. Remove from heat and continue beating with the whisk until cool.

In another bowl, whisk the cream until it forms soft peaks, then gently fold into the cool egg mix until just combined. Pour the mix into a shallow container or dish that can be frozen. Just before you freeze the mixture gently swirl the raspberry puree through, cover with cling film and freeze for at least 6 hrs. Remove from the freezer about 20 minutes before serving. Place scoops of the ice cream into bowls with extra raspberries or other fruit. It's also gorgeous in cones.

**Serves: 12 people**  
**Preparation and cooking**  
**time: 30 minutes**





## a taster of what's coming up...

### CINEMA

#### Anna

from 5th July

Beneath Anna Poliatova's striking beauty lies a secret that will unleash her indelible strength and skill to become one of the world's most feared government assassins. An electrifying thrill ride unfolding with propulsive energy, startling twists and breath-taking action, this film features a star-studded cast including Helen Mirren and Cillian Murphy.



#### The Queen's Corgi

from 5th July

Rex lives a life of luxury as top dog but when he causes a diplomatic incident during an official dinner with the President of the United States, he falls into disgrace. Betrayed by one of his peers, Rex becomes a stray dog in the streets of London. How can he redeem himself?



#### Horrible Histories: The Movie – Rotten Romans

from 26th July

Atti is a Roman teenager with brains but very little brawn. When one of his schemes falls foul of Emperor Nero,



Atti is forced to join the army and sent to cold, wet Britain. Things go from bad to worse when Atti is captured by Orla, a feisty teenager desperate to prove herself as a warrior.

To book please visit [www.cineworld.co.uk](http://www.cineworld.co.uk)

### THEATRE

The Core Theatre, Solihull  
(formerly Solihull Arts Complex)

#### Elmer The Patchwork Elephant

23 & 24 July

Elephants, as everyone knows, are big, have trunks, and are grey. But Elmer is a patchwork of brilliant colours. His fun-loving and cheerful personality keeps everyone in a playful mood, until the day he decides to find out what it would be like to blend in with the herd.



#### Gangsta Granny

31st July & 1st August

Be prepared for some shocking granny behaviour at this outdoor adaptation (in Brueton Park) of David Walliams' bestseller. Who knows what a senior citizen might think of next ...as

a boy, bored at his grandma's house, stumbles across some shocking news about his granny once being a jewel thief!

#### Romeo & Juliet

17th July

Shakespeare's Romeo and Juliet will be performed in the lakeside setting of Brueton Park, Solihull. Set in the here and now, and mixing in some modern language, music, and technology, this production explores how one of the most celebrated tales of passionate love would play out in the 21st century.

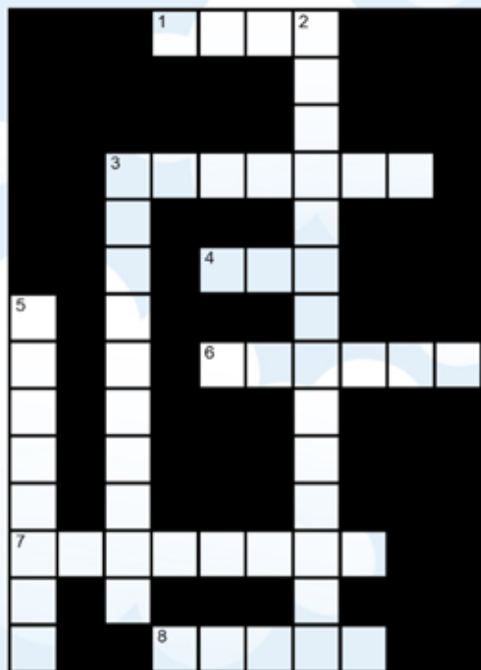


To book please visit [www.thecoretheatresolihull.co.uk](http://www.thecoretheatresolihull.co.uk)

# Kids Page

## A Day at the Beach

Can you solve our picture clue crossword?



### ACROSS



### DOWN



Picture Puzzle Solution

## Beach Bucket Riddle

I am weightless, but you can see me. Put me in your bucket, and I'll make it lighter. What am I?

A hole  
Beach Bucket Riddle Solution



# a good read

reviews By Willow Coby

## A Lily in the Light

by Kristen Fields



A child going missing is every parent's worst nightmare. And many books have been written with this as the main plot device, as the parents try to cope with events that follow. However, this debut novel approaches it from a different angle.

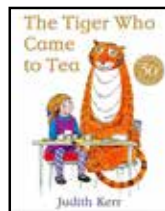
Esme is 11 years old and for her, ballet is life. She is on the brink of every young ballerina's dream as she is told that she is ready to go 'en pointe'. But this joy is snatched from her one evening as the family gather to enjoy a meal. Suddenly, and inexplicably, Esme's four-year-old sister Lily disappears. The family starts to fall apart, but as readers we experience this through the eyes of Esme, not her parents.

In the second half of the novel the action switches to Paris eight years later where Esme is performing as a ballerina. We learn of the intervening years. How Esme felt that she lost so much more than a sister; she lost her parents too. She has used dance to take herself away from it all. Until she receives a phone call from her older sister, on the other side of the Atlantic.

Are the family about to learn of Lily's fate, and how will they bring themselves together, healing divisions and unspoken accusations?

## The Tiger who Came to Tea

by Judith Kerr



Sometimes days play out in endless repetition. Nothing exciting ever happens. But what if one day the unexpected occurred?

Just like any day Sophie is having tea in the kitchen with her mother, when the doorbell rings. They wonder who it could be. The milkman with his milk float? The grocer on his bike? Or Sophie's daddy? What they are not expecting is a large tiger, who joins them at the table. Just what will happen when a tiger comes to tea?

This classic children's picture book is now more than 50 years old and yet it still continues to enchant children. A simple story and delightful illustrations make this a favourite among many young readers. A TV adaptation is due to air at the end of 2019 but do make sure you share the original with your children first. Judith Kerr, who wrote and illustrated over 30 other books, including the Mog series, died in May this year aged 95. It seems a perfect time to celebrate her life.

# useful numbers

Shirley Lions Club 0345 833 9547

## Health

NHS non-emergency 111

Grove Surgery 0121 705 1105

Northbrook Group Practice 0121 746 5000

Hobs Moat Medical Centre 0121 742 5211

Solihull Hospital 0121 424 2000

Spire Parkway Hospital 0845 850 1451

## Council

Solihull Council 0121 704 6000

## Utilities

Electricity power cut 0800 6783 105

Gas leak 0800 111 9999

Severn Trent Water 024 7771 5000

Severn Trent Water (emergencies) 0800 783 4444

## Travel

National Rail Enquiries 03457 48 49 50

Network West Midlands (buses) 0345 303 6760

## LOCAL COUNCILLORS

### SILHILL

#### Mike Gough

Tel: 07480 253181

Michael.gough@solihull.gov.uk

#### Peter Hogarth MBE

Tel: 0121 705 5455

phogarth@solihull.gov.uk

#### Robert Hulland

Tel: 0121 707 0493

rhulland@solihull.gov.uk

### ST ALPHEGE

#### Stuart Davis

Tel: 01564 776293

sdavis@solihull.gov.uk

#### Joe Tildesley

Tel: 0121 705 3086

joetildesley@solihull.gov.uk

#### Kate Wild

Tel: 07917 550 644

kawild@solihull.gov.uk

**Councillor surgeries** these are face-to-face meetings held by councillors for local people to raise issues in their area. Held at The Core Library, Solihull on the first and last Saturday of the month, 10am – 12 noon.

## local police contact for Solihull

Solihull police station

Telephone: 0845 113 5000





## Bathrooms

8 Bathrooms Galore	0121 783 9966
28 EH Smith	0121 713 7100

## Car Services

11 Johnsons Cars	01564 454 081
19 Crossroads Service Station	01564 703 225
20 AP Alloys	07972 852 758
21 Easy Lease	0121 693 0573

## Blinds & Curtains

9 Tudor Rose	07518 851 063
--------------	---------------

## Care Services

16 Home Instead	0121 270 4615
-----------------	---------------

## Carpets

23 Don Mander	01564 700 200
---------------	---------------

## Conservatories

1 Heart of England	01564 792 900
--------------------	---------------

## Doors

19 Garolla garage doors	0121 369 0774
-------------------------	---------------

## Drives

10 Dimension Landscape & Driveways	0121 733 1463
15 Central Drives & Landscapes	07748 577 687

## Electricians

12 AC Electrical	07960 266271
------------------	--------------

## Events

3 Summer Fest	<a href="http://www.solihullsummerfest.co.uk">www.solihullsummerfest.co.uk</a>
7 Nailcote Hall	02476 466 174
16 Land Rover Sports & Social Club	0121 742 5490

## Fascias & Gutters

22 Proline	0800 956 1315
------------	---------------

## Financial planners

2 Jamieson Christie	01676 532 210
---------------------	---------------

## Furniture repair / re-upholstery

13 Sofafix	0121 743 5116
------------	---------------

## Garden Services

10 Dimension Landscape & Driveways	0121 733 1463
15 Central Drives & Landscapes	07748 577 687
37 Earlswood Garden Centre	01564 702 314
38 Oakland Group	01564 758 608

## Graphic and Website Design

29 Hotlobster Design Ltd	0121 369 1977
--------------------------	---------------

## Handyman Services

25 Prestige Multi-Trades	07886 922 280
--------------------------	---------------

## Heating

9 Stephen Smith Heating & Plumbing	01564 200 119
------------------------------------	---------------

## Kitchens

5 Dream Doors	0121 314 0956
28 EH Smith	0121 713 7100
39 Granite Transformations	01926 675 230

## Plumbing

9 Stephen Smith Heating & Plumbing	01564 200 119
------------------------------------	---------------

## Roofing

12 C Stevens Roofing	0121 733 1276
40 N Bird & Son	0800 195 6946

## Travel Agent

16 Not Just Travel	07565 534 524
--------------------	---------------

5	6	8	1	4	9	3	2	7
9	2	7	3	6	5	4	8	1
4	3	1	2	7	8	6	5	9
2	7	6	4	3	1	5	9	8
3	4	9	5	8	2	1	7	6
1	8	5	6	9	7	2	4	3
7	1	4	8	5	6	9	3	2
6	9	3	7	2	4	8	1	5
8	5	2	9	1	3	7	6	4

## Sudoku Solution

from page 27

T	H	E	S	I	S	B	U	S	T	U	P
O	N	K	E	E	N						
T	U	T	O	R	I	N	G		D	E	F
S	W	T	A	G	O						
M	E	N	D		T	E	N	D	E	R	L
		O	L								D
		C	O	N	T	E	S	T	A	N	T
Y					R				U		
M	A	C	A	R	O	N	I		M	I	C
N	L	A	L						E	A	
K	I	W	I		S	C	O	U	R	E	R
D	V	I		G		A			G		
R	E	C	E	S		Y	E	L	L	O	

## Crossword Solution

from page 27

# YOUR LOCAL, INDEPENDENT ONE-STOP GARDEN SHOP

## PAVING SUPERSTORE

CONCRETE • SANDSTONE • LIMESTONE  
GRANITE • PORCELAIN • BLOCK PAVING  
WALLING • STEP STONES and much more...



Possibly the largest selection of paving & walling  
in the Midlands at the **most competitive prices!**

**Come and view our huge paving display and  
speak to our friendly team of experts.**

## TURF & TOPSOIL



**STERLING PREMIUM GRADE TURF**  
Ideal for domestic lawns, sports pitches & general recreation

1 Sq.M Roll from **£3.51**



**TOPSOIL**

6 Grades Available in polybag, bulk bag or loose tips

Bulk Bag (0.5cu.m) from **£22**

## COTSWOLD STONE DECORATIVE AGGREGATES

20mm hard angular chipping  
Ideal for driveways & paths



25kg  
**Polybag**  
from **£5**

0.5cu.m  
**Loose Tip**  
**£55**

0.5cu.m  
**Bulk Bag**  
from **£65.55**

## BRAND NEW PLANT CENTRE COMING SPRING 2018!



## WE MANUFACTURE.....



FENCE PANELS



SHEDS



SUMMERHOUSES



TOOL STORES



BESPOKE BUILDINGS

**CUSTOM SIZES AND STYLES AVAILABLE TO ORDER. ASK FOR FURTHER DETAILS**

There's **NINETEEN** other businesses at the centre including a gent's barbers, bespoke card shop  
Dog Groomer, Tree Surgeon, Garden Designer and even a Photo Studio - come and take a look!

**OPEN 7 DAYS - BUY ONLINE ANYTIME!**



**EARLSWOOD GARDEN & LANDSCAPE CENTRE**

FORSHAW HEATH ROAD, EARLSWOOD, SOLIHULL, B94 5JU

**t. 01564 702 314 www.earlswoodglc.co.uk**

@EarlswoodGLC

\*Terms & Conditions Apply. Prices include VAT and are correct at time of print.

# OAKLAND



## GROUP

Service Quality Value

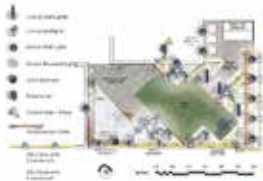
### Professional Outdoor Services



Tree Surgery & Hedging



Landscaping



Garden/Lighting  
Design



Porcelain Garden



Fencing



Planting &  
Irrigation



Outdoor Lighting



Borders &  
Maintenance



Mowing Services



Visit us at Rosebourne Garden Centre  
Kenilworth Rd, Hampton in Arden,  
Solihull, B92 0LP



Commercial Works



## 01564 758 608

[www.oaklandgroupuk.com](http://www.oaklandgroupuk.com)

[www.12vgardenlights.com](http://www.12vgardenlights.com)

email: [info@oaklandgroupuk.com](mailto:info@oaklandgroupuk.com)



Kitchen - Perla Bianca worktop and Royal Ivory flooring  
with Metropolis Opal mosaic and Metallic Champagne doors  
Mr & Mrs Gent, Ramsbottom, Lancashire

AFTER



# 1 million home owners can't be wrong



Over a million home owners around the world have discovered there was no need to rip out and replace their old kitchens, when they could simply transform them. Using our unique top that fits on top, rather than removing your old worktops, we simply fit directly over them, creating no debris or dust. With over 25 colours to choose from, all fully fitted by us, it's the simplest way to achieve your new look.



**FREE QUOTATION & Measuring Service**  
Visit our showroom or call to book a  
free home consultation



**PROFESSIONALLY Fitted In One Day**  
Our lifetime warrantied granite, quartz,  
recycled glass & porcelain worktops



[granitetransformations.co.uk](http://granitetransformations.co.uk)

Warwick Showroom: Hatton Shopping Village, Dark Lane, Hatton,  
Warwick CV35 8XA **01926 675 230**

Banbury Showroom: Unit 8, Swan Industrial Estate, Gatteridge St,  
Banbury, Oxfordshire OX16 5DH **01295 515 880**

Rugby Showroom: 15 Regent Street, Rugby CV21 2PE **01788 297 852**



# ROOFING

by

# N. BIRD & SON

*Est 1987 Solihull based*



**FREE QUOTES**

**0121 743 6324**

- Small repairs
- Flat roofs
- New roofs
- Ridge tiles

- Chimney work
- Lead work
- UPVC fascia, soffit & gutters

249 Lyndon Road, Solihull B92 7QP

**NO PAYMENT UNTIL YOU ARE 100% SATISFIED**